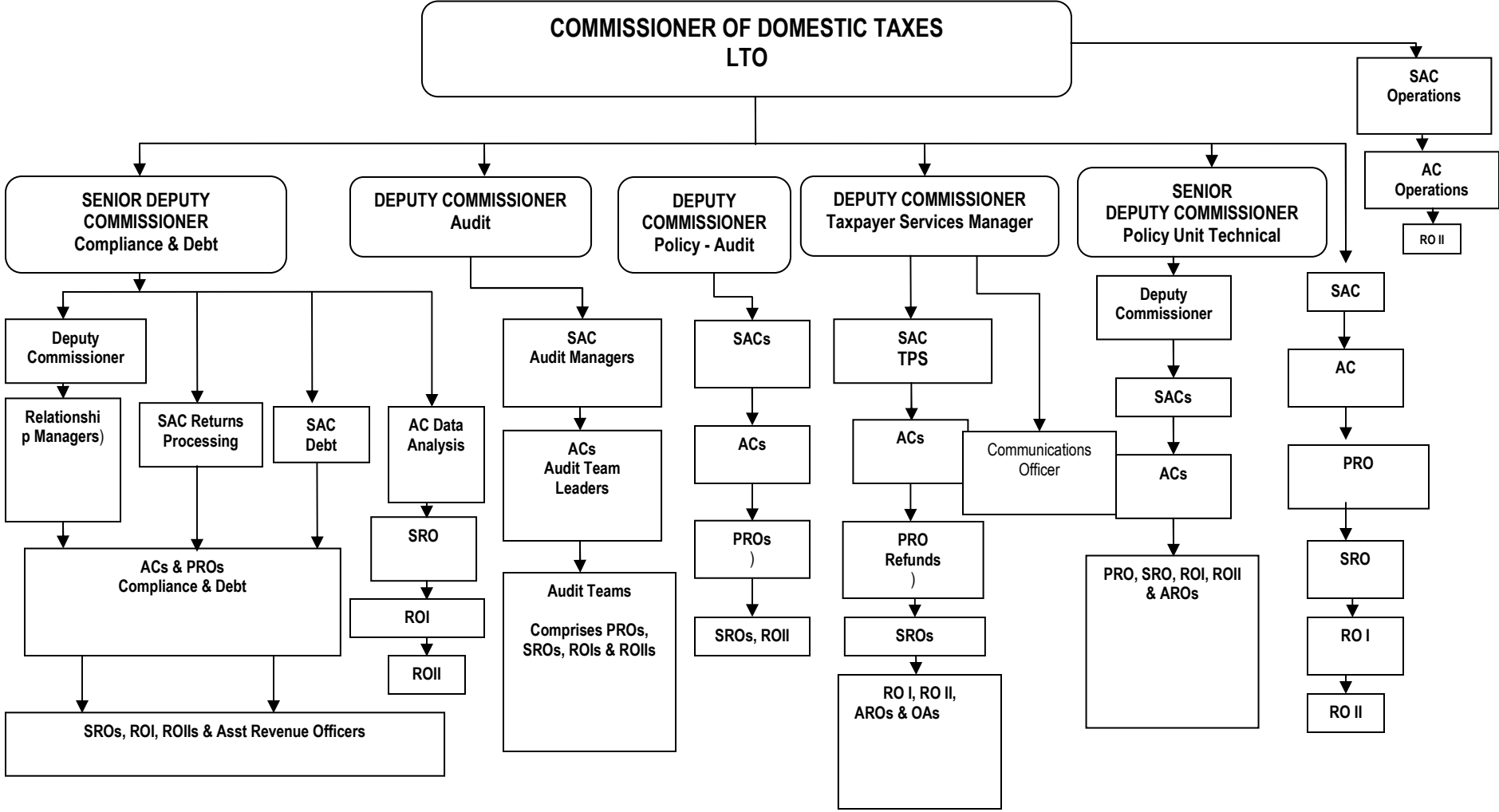


Current Structure

KENYA REVENUE AUTHORITY DOMESTIC TAXES DEPARTMENT – LTO ORGANIZATION

Last Update: 2009



Notes: LTO – Large Taxpayers Office, PA – Personal Assistant, SAC – Senior Assistant Commissioner, AC – Assistant Commissioner, PRO – Principal Revenue Officer, SRO – Senior Revenue Officer, RO – Revenue Officer, ARO – Assistant Revenue Officer