



**KENYA REVENUE
AUTHORITY**

ISO 9001:2015 CERTIFIED

PUBLIC

**ONLINE SALES
CONTROL UNIT
(OSCU)
REQUIREMENTS &
COMMUNICATION
PROTOCOLS**

**DOMESTIC TAXES
DEPARTMENT**

Version 2.0

Date: April 2023

Tulipe Ushuru, Tujitegemee!

CONFIDENTIALITY DISCLAIMER

THIS DOCUMENT AND THE INFORMATION IN IT ARE PROVIDED IN CONFIDENCE, FOR THE SOLE PURPOSE OF KENYA REVENUE AUTHORITY AND MAY NOT BE DISCLOSED TO ANY THIRD PARTY OR USED FOR ANY OTHER PURPOSE WITHOUT THE EXPRESS WRITTEN PERMISSION OF KENYA REVENUE AUTHORITY.

Any form of reproduction, dissemination, copying, disclosure, modification, distribution and or publication of this material is strictly prohibited.

The contents of this document have not been independently verified and they do not purport to be comprehensive, or to contain all the information that a prospective investor may need. No representation, warranty or undertaking, expressed or implied is or will be made or given and no responsibility or liability is or will be accepted by KENYA REVENUE AUTHORITY or by any of its directors, employees or advisors in relation to the accuracy or completeness of this document or any other written or oral information made available in connection with the Company.

DOMESTIC TAXES DEPARTMENT

DOCUMENT REVISION

REVISION NO.	TITLE/ WHAT'S NEW	AUTHOR	DATE
1.0.1	OSCU Specification doc	KRA	03/02/2023
2.0	Updated OSCU production and test urls	KRA	20/04/2023



Online Sales Control Unit API Specification Document

1. OSCU Service	4
1.1. Introduction	4
1.2. Environment	4
2. Technical Outline	5
2.1 The Application Process to Use OSCU	5
2.2 OSCU running process and main configurations	5
2.3 A sample of OSCU Guide document	5
3 OSCU Business Process	6
3.1 OSCU functions	6
3.2 Details of OSCU functions	9
3.2.1 List of OSCU functions	9
3.3 Specification	13
3.3.1 Device Initialization	13
3.3.2 Code information	15
3.3.3 Item Information	20
3.3.4 Branch Information	27
3.3.5 Import Item Information	32
3.3.6 Sales Information	37
3.3.7 Purchase Information	43
3.3.8 Stock Information	53
4 Code Definition	60
4.1. Tax Type	60
4.2. Taxpayer Status	60
4.3. Product Type	60
4.4. Countries Code	60
4.6. Packaging Unit	68
4.7. Unit of Quantity	69
4.8. Currency	71
4.9. Transaction Type	76
4.10. Sales Receipt Type	77
4.11. Payment Method	77
4.12. Transaction Progress	77
4.13. Registration Type	77
4.14. Purchase Receipt Type	78
4.15. Stock In/Out	78
4.16. Import Item Status	78
4.17. Credit Note Reason	78
4.18. API Response Code	79
4.19. Item Code	80

1. OSCU service

1.1. Introduction

Online Sales Control Unit (OSCU) is a communication module for private Trader Invoicing System (TIS) applications to **send/receive** various data to and from the KRA eTIMS API server. OSCU includes SKMM that manages encryption and signature data, internal data, and keys.

1.2. Environment

OSCU has two types; Production and Test.

Type	Description	Remark
Production OSCU	Server TIS application utilizes a Production OSCU to send and receive data to and from the KRA eTIMS API production server.	
Test OSCU	During development, the test application can send and receive test data to and from the KRA eTIMS API test server using a Test OSCU.	

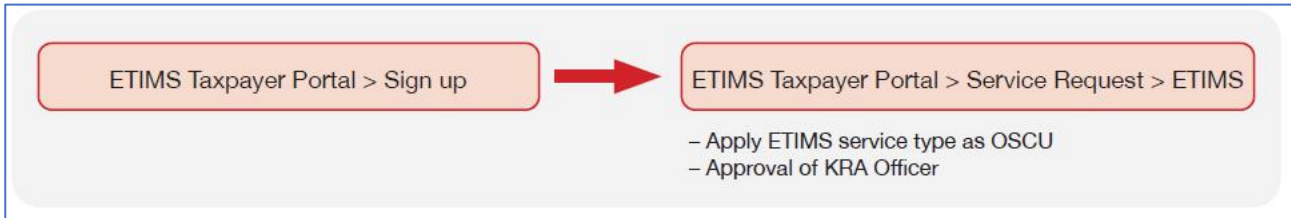
The following are the test OSCU technical information

Title	Contents	Remark
Interface data format	JSON	
eTIMS OSCU API Server Address (Production)	https://etims-api.kra.go.ke/etims-api/	
eTIMS OSCU API Server Address (Test)	https://etims-api-sbx.kra.go.ke/etims-api/	

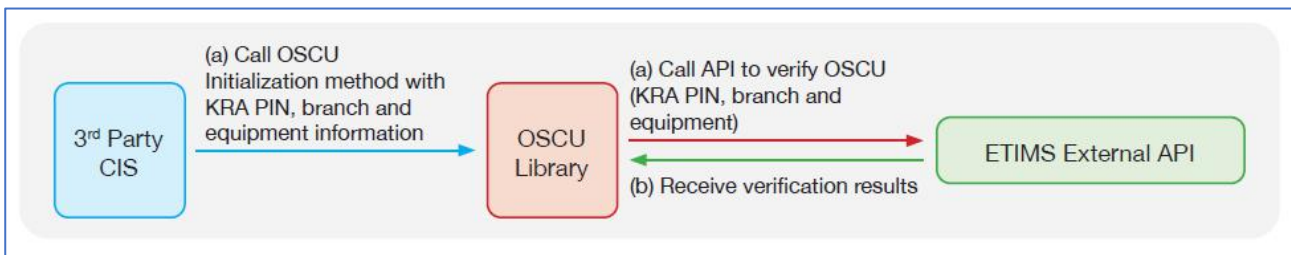
2. Technical Outline

2.1 The Application Process to Use OSCU

To use OSCU, a taxpayer must apply for OSCU service and get approval from KRA.



After the approval of OSCU, a taxpayer can install OSCU in a server and start activation. When a taxpayer calls the initialization Method of OSCU with PIN, branch office, and equipment information, OSCU will begin verification of the device and receive communication key from the KRA eTIMS API server.



2.2 OSCU Running Process and Main Configurations

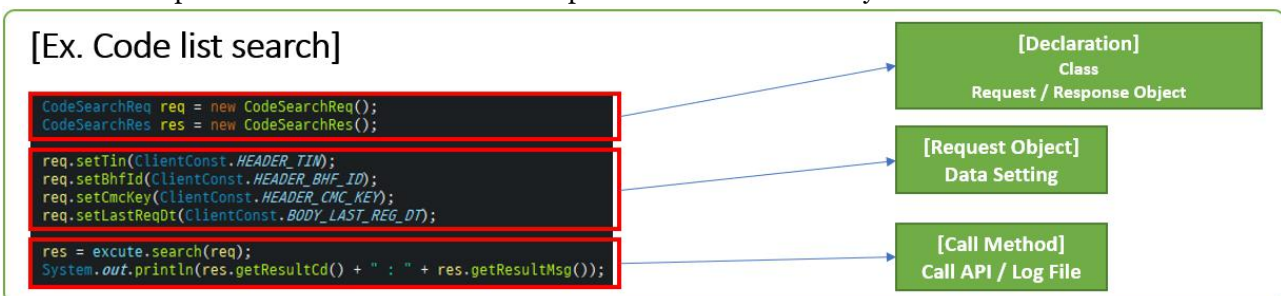
There are several technical policies that OSCU users have to follow.

1. To use OSCU Library, Internet is always needed as OSCU Library will be communicating to KRA eTIMS API.
2. Sending/Receiving data to and from eTIMS API Server will be done by calling Methods of OSCU Java library.
3. To retrieve the latest data from eTIMS API server, OSCU shall send the 'Date and Time' on which the kind of data was finally received from the eTIMS API server. So, the 'Date and Time' of final request should be managed by TIS, and once successfully retrieved, TIS shall update the latest 'Date and Time' to the related data for the next update.

Note: For non Java application, you can directly connect to eTIMS API server without passing through OSCU Library.

2.3 A Sample of OSCU Guide Document

Below is a sample Java code to show how developers can use OSCU library



The figure above shows the flow of data exchanged between eTIMS API server and TIS application using OSCU.

3 OSCU Business Process

3.1 OSCU Functions

The Java Methods used in this OSCU are grouped by its purpose into eight (8) categories. The below briefly introduces the purpose of each category.

1. Data initialization (Send only)
 - a. For a device authentication (OSCU), registration and approval of equipment must be completed.
2. Code data (Get only)
 - a. Methods of this category are used to receive necessary standard codes and data from the eTIMS API Server, which is the basis of generating invoice data. To send Invoice data to the eTIMS API server, the consistency of the data is essential.
 - b. The standard codes and data are including; item classification code for managing item, location code, and package, weight code, PIN list and notice from KRA. For more information, check code definition chapter.
3. Branch information (Get and Send)
 - a. Some methods of this category are to send customer list of head and branch offices and user accounts of branch offices.
 - b. This category has a method which requests branch codes to be used later while sending stock from main branch to branch offices.
4. Item information (Get and Send)
 - a. Methods of this category are to send registered item and item composition information in a TIS application.
 - b. In case you want to recover your items, you can receive them through eTIMS API server.
5. Imported item (Get and Send)
 - a. Methods of this category are to receive data of imported items which is declared by the PIN of TIS application owner and to send confirmation of the received imported items.
 - b. The imported items data are retrieved from KRA customs system and data can be used for stock adjustment.
6. Sales management (Send only)
 - a. Methods of this category are to send data of sales transaction and sales Invoice to eTIMS Server.
 - b. Sales transaction data is composed of sales contract such as Customer PIN, Customer Name, Sales Type Code, Receipt Type Code, Payment Type Code, Invoice Status Code, Validated Date, Sale Date, Stock Released Date, Cancel Requested Date, Canceled Date Refunded Date and etc.
 - c. Sales Invoice data is composed of Invoice information such as Invoice Number, Current Receipt Number, Total Receipt Number, Customer PIN, Customer Mobile Number, Receipt Published Date, Internal Data, Receipt Signature and etc.
7. Purchase information (Get and Send)
 - a. Methods of this category are to request data of purchase transaction of the PIN of TIS application owner to eTIMS Server and send confirmation of the transaction.
 - b. When a seller registers sales transaction and Invoice data to eTIMS Server, buyer can request such data for purchase confirmation and stock adjustment purpose.
8. Stock information (Get and Send)
 - a. Methods of this category are to send inventory in and out and stock status by item of TIS application to eTIMS Server.
 - b. Methods of this category also request stock from main branch

The table below outlines the tasks required to send and receive data to and from the eTIMS API server.

Category	Action of TIS side	Description	Remark
Initialization	Device authentication (OSCU)	Device authentication (OSCU) from KRA. 3rd party users must complete an eTIMS service request. Registration and approval of equipment is completed by KRA after submission of equipment use application (tentative name).	Refer to '2.1. Applying Process to use OSCU'
Basic data management	Get code list	TIS application can update common standard codes managed by KRA from eTIMS API server	
	Get item classification list	Server TIS application can update item classification codes managed by KRA from eTIMS API server.	
	Get PIN information	TIS application can get information on a certain PIN from eTIMS server	
	Get the branch list of head office(store)	TIS application can update the branch office information of head office into eTIMS API server.	
	Get notice list from eTIMS API server	TIS application gets eTIMS notification managed by KRA from eTIMS API server.	
Branch information management	Send customer information	TIS application sends customer information of the head & branch offices into eTIMS Server.	
	Send branch user account	TIS application sends branch user account information to upload it in eTIMS Server.	
	Send branch insurance information	TIS application sends insurance information of the head & branch offices and update it in eTIMS Server	Applied to Pharmacy only
Item management	Send Item information	TIS application sends item information (name, unit price, bar code and etc.) of the head or branch offices and updates them in eTIMS Server	Head office(store) role
	Send Item Composition information	TIS application sends item composition information of the head or branch store and updates them in eTIMS API server. Item composition is used to calculate BOM (Bill of Material) of the final processed items.	Head office(store) role
	Get item list	TIS application gets item information updated to eTIMS Server by TIS application.	
Imported item management	Get imported item information	TIS application gets imported item information managed by KRA	Head office(store)



Category	Action of TIS side	Description	Remark
		customs department. All the import declaration result of an owner of TIS application is provided from eTIMS Server.	role
	Send (converted) imported item information	TIS shall convert the received imported item information into eTIMS standard item information for sales (inventory). TIS application sends converted imported items information to eTIMS API server.	Head office(store) role
Sales management	Send sales transaction and sales Invoice information	TIS application sends sales transaction and sales invoice information to eTIMS API server.	
Purchase transaction management	Get purchase transaction information	TIS application gets purchase transaction information which were registered to eTIMS Server by a seller under TIS application owner's PIN.	Head office(store) role
	Send purchase transaction confirmation	TIS application sends purchase transaction confirmation of received purchase transaction information to eTIMS Server.	Head office(store) role
Stock management	Send stock in/out information	When adjusting inventory quantities or selling items at each branches or head office, TIS application sends the stock in/out information to the eTIMS Server. Every stock in/out information must have its sales Invoice information sent in advance to eTIMS Server.	
	Send stock inventory information	If stock inventory information is changed due to stock IN / OUT, Server TIS application sends the changed information of the inventory master and stores it in the eTIMS API server. Every stock inventory information must have its stock in/out information sent in advance to eTIMS Server.	
	Receive stock from head office.	Branch office should request for inventory coming from head office.	

3.2 Details of OSCU functions

3.2.1 List of OSCU functions

Section	Class	Method	Description	Preconditional method	Argument Object	Return Object
Initialization	DeviceVerificationExcute	verification	Lookup initial setup information of OSCU Device		DeviceVerificationReq	DeviceVerificationRes
		You can look up the initial configuration information registered in the server. This function provides authenticated information of OSCU device.				
Basic data management	CodeExcute	search	Lookup list of code		CodeSearchReq	CodeSearchRes
		You can lookup common code list registered in server with this function. This API function provides code classification and code detail at once.				
	ItemExcute	searchCls	Lookup list of item classification		ItemClsSearchReq	ItemClsSearchRes
		You can lookup list of item classification registered in server with this function. This API function provides item category and item list at once.				
	CustomerExcute	search	Lookup customer information		CustSearchReq	CustSearchRes
		You can Lookup taxpayer's information registered in server with this function. This API function synchronizes the taxpayer information registered on the server with client.				
	BhfExcute	search	Lookup list of taxpayer branch information		BhfSearchReq	BhfSearchRes
		You can lookup list of taxpayer branch information registered in server. This API function provides every information of taxpayer branch.				
NoticeExcute	search	Lookup the list of notice		NoticeSearchReq	NoticeSearchRes	
	You can lookup the list of notice in taxpayer client. This API function provides list of notice registered in the server.					
Branch information management	BhfExcute	saveCustomer	Save customer of branch		BhfCustSaveReq	BhfCustSaveRes
		You can store branch information in server for recover the client data. This API function stores the client customer information managed by the store on the server.				
		saveUser	Save branch user account		BhfUserSaveReq	BhfUserSaveRes

		You can store branch user account in server. This API function stores the user account information of taxpayer branch in server. ISO 9001:2015 CERTIFIED				
		saveInsurance	Save Insurance company information of branch		BhfInsuranceSaveReq	BhfInsuranceSaveRes
		You can save insurance company information which taxpayer branch uses in server. This API function performs storing the insurance company information managed by taxpayer pharmacy.				
Product item management	ItemExcute	search	Lookup list of item(product)		ItemSearchReq	ItemSearchRes
		You can lookup the list of Item information in server. This API function provides list of product information for taxpayer registered in server. For more information, refer to '3.3.3.3. ItemSearchReq/Res'				
		save	Save Item		ItemSaveReq	ItemSaveRes
		You can save the product information in server. This API function performs storing item information managed by the taxpayer client in the server. For more information, refer to '3.3.3.2 ItemSaveReq/Res'				
		saveComposition	Save Item Composition	save	ItemCompositionSaveReq	ItemCompositionSaveRes
		You can store item composition in server. This API function performs storing taxpayer's item composition information in server. But this information is used during restoration of client. It is not able to be looked up in server.				
Imported item management	ImportItemExcute	search	Lookup list of imported item		ImportItemSearchReq	ImportItemSearchRes
		You can lookup list of taxpayer's imported item in server. This API function provides information of taxpayer's imported item in server. For more information, refer to '3.3.5.1 ImportItemSearchReq /Res'				
		update	Revise imported item		ImportItemUpdateReq	ImportItemUpdateRes
		You can approve or reject imported items from the server. The taxpayer adds the imported items to item and stock. The imported item information is transferred to the server through this API function.				
Sales transaction management	TrnsSalesExcute	save	Save sales transaction		TrnsSalesSaveWrReq	TrnsSalesSaveWrRes
		You can save sales transaction and sales invoice information in server. This API function transfers the transaction information of taxpayer client's sales to the server.				
Purchase transaction management	TrnsPurchaseExcute	saerchPurchaseSales	Lookup purchases-sales transaction list		TrnsPurchaseSalesSearchReq	TrnsPurchaseSalesSearchRes
		You can lookup sales infomation in order to regiser purchases on taxpayer's branch registered in server. This API function provides unregistered infomations on taxpayer's purchases list among sales list that taxpayer is assigned to transaction party.				
		save	Save Purchase information		TrnsPurchaseSaveReq	TrnsPurchaseSaveRes
		You can store purchases info in server. This API function sends the purchase transaction information generated from the				

		taxpayer client and stores it.				
		ISO 9001:2015 CERTIFIED				
Stock management	StockExcute	saveMaster	Save stock master information	saveIO	StockMasterSaveReq	StockMasterSaveRes
		You can store the stock master information in server. This API function saves the inventory master information managed by taxpayer client to the server.				
		getMoveList	Lookup the list of stock movement		StockMoveReq	StockMoveRes
		You can lookup the stock movement list in server. This API function provides the result of the shifting stock quantity between the head office and the branches. in the server.				
		saveIO	Save stock in/out		StockIoSaveReq	StockIoSaveRes
		You can store taxpayer stock in/out information in server. This API function performs storing stock in/out data registered by taxpayer client of head/branch in the server.				

※ Sample of guidance for developers

Below feature illustrate how a module can retrieve code list. This example is intended to help developers understand the contents of the next page “**3.3. Specification**”.

Section	Class	Method	Description	Preconditional method	Argument Object	Return Object
Initialization	DeviceVerificationExeute	verification	Lookup initial setup information of OSCUDevice		DeviceVerificationReq	DeviceVerificationRes
			You can look up the initial configuration information registered in the server. This function provides authenticated information of OSDC device.			

3.3.1.1. DeviceVerificationReq/Res

This part describes the components of API function ([url : /selectInitOsdclInfo](#)) and data types for each item. This API function is divided into 'Request: Argument' and 'Response: Return Object'. The DeviceVerificationReq is an Argument Object of Request. The DeviceVerificationRes is a Return Object of Response.

Object				Attribute				
Object ID	Object Name	Sub Object_1		Attribute ID	Attribute Name	Data Type	Required	Data Length
		Object ID	Object Name					
DeviceVerificationReq	Initialization Request of OSCU device authentication			pin	KRA PIN	STRING	Y	9
				bhfid	Branch ID	STRING	Y	2
				dvcSrIno	Device Serial Number	STRING	Y	100
JSON SAMPLE								
{"tin": "999991130", "bhfid": "00", "dvcSrIno": "dvcv1130"}								

※ The contents of the JSON SAMPLE column are example code of JSON data transmitted when sending / receiving API.

Object				Attribute						
Object ID	Object Name	Sub Object_1		Attribute ID	Attribute Name	Data Type	Required	Data Length		
		Object ID	Object Name							
DeviceVerificationRes	Response of OSDC device authentication			resultCd	Result Code	STRING		3		
				resultMsg	Result Message	STRING				
				resultDt	Result Date	STRING		14		
		InitTaxpayer	Taxpayer information			pin	KRA PIN	STRING		11
						taxprNm	Taxpayer Name	STRING		60
						bsnzActv	Business Activity	STRING		100
		InitBranch	Branch information			bhfid	Branch Office Id	STRING		2
						bhfnm	Branch Office Name	STRING		60
						prvncNm	Province Name	STRING		100
						detrNm	District Name	STRING		100
						sectrNm	Sector Name	STRING		100
						locDesc	Location Description	STRING		100
						hqYn	Head Quarter	STRING		1
		mgrNm	Manager Name	STRING		60				

3.3 Specification

3.3.1 Device Initialization

3.3.1.1 DeviceVerificationReq/Res

This part describes the components of API function (**url** : /selectInitOsdcInfo) and data types for each item. This API function is divided into '**Request: Argument**' and '**Response: Return Object**'. The DeviceVerificationReq is an Argument Object of Request, The DeviceVerificationRes is a Return Object of Response.

Object				Attribute				
Object ID	Object Name	Sub Object_1		Attribute ID	Attribute Name	Data Type	Required	Data Length
		Object ID	Object Name					
DeviceVerificationReq	Initialization Request of OSCU device authentication			tin	PIN	CHAR	Y	11
				bhfid	Branch ID	CHAR	Y	2
				dvcSrlNo	Device Serial Number	CHAR	Y	100
JSON SAMPLE								
{"tin": "A123456789Z", "bhfid": "00", "dvcSrlNo": "dvcv1130"}								

※ The contents of the JSON SAMPLE column are example code of JSON data transmitted when sending / receiving API.

Object				Attribute						
Object ID	Object Name	Sub Object_1		Attribute ID	Attribute Name	Data Type	Required	Data Length		
		Object ID	Object Name							
DeviceVerificationRes	Response of OSCU device authentication			resultCd	Result Code	CHAR		3		
				resultMsg	Result Message	CHAR				
				resultDt	Result Date	CHAR		14		
		InitTaxpayer	Taxpayer information			tin	PIN	CHAR		11
						taxprNm	Taxpayer Name	CHAR		60
						bsnsActv	Business Activity	CHAR		100
		InitBranch	Branch information			bhfid	Branch Office Id	CHAR		2
						bhfNm	Branch Office Name	CHAR		60
						bhfOpenDt	Branch Registration Date	CHAR		8
				prvncNm	County Name	CHAR		100		

Tulipe Ushuru, Tujitegemee!

ISO 9001:2015 CERTIFIED

Object				Attribute				
Object ID	Object Name	Sub Object_1		Attribute ID	Attribute Name	Data Type	Required	Data Length
				dstrtNm	Sub-County Name	CHAR		100
				sctrNm	Tax Locality Name	CHAR		100
				locDesc	Location Description	CHAR		100
				hqYn	Head Quarter	CHAR		1
				mgrNm	Manager Name	CHAR		60
				mgrTelNo	Manager Contract Number	CHAR		20
				mgrEmail	Manage Email	CHAR		50
		InitDevice	Device information	dvcId	Device id	CHAR		20
				sdicId	Sales Control Unit ID	CHAR		18
				mrcNo	MRC No	CHAR		11
				cmcKey	Communication KEY	CHAR		255
JSON SAMPLE								
<pre>{ "resultCd": "000", "resultMsg": "It is succeeded", "resultDt": "20200226143124", "data": { "info": { "tin": "A123456789Z", "taxprNm": "Taxpayer1130", "bsnsActv": "business", "bhfid": "00", "bhfNm": "Headquater", "bhfOpenDt": "20200226", "prvncNm": "NAIROBI CITY", "dstrtNm": "WESTLANDS", "sctrNm": "WON", "locDesc": "Westlands Towers", "hqYn": "Y", "mgrNm": "manage1130_00", "mgrTelNo": "0789001130", "mgrEmail": "manage113000@test.com", "dvcId": "9999911300000001", "sdicId": "KRACU013000001", "mrcNo": "WIS01000150", "cmcKey": "fob9831bd2334874b7ec815e40347bc4" }}} </pre>								

Tulipe Ushuru, Tujitegemee!

3.3.2 Code Information

3.3.2.1 CodeSearchReq/Res

This part describes the items of code API function (url : /**selectCodeList**) and data types for each item. API functions are divided into 'Request: Argument' and 'Response: Return Object'. The **CodeSearchReq** is an Argument Object of Request, The **CodeSearchRes** is a Return Object of Response.

Object						Attribute				
Object ID	Object Name	Sub Object_1		Sub Object_2		Attribute ID	Attribute Name	Data Type	Required	Data Length
		Object ID	Object Name	Object ID	Object Name					
CodeSearchReq	Search code Request	-	-	-	-	tin	PIN	CHAR	Y	11
		-	-	-	-	bhfId	Branch ID	CHAR	Y	2
		-	-	-	-	cmcKey	Communication Key	CHAR	Y	255
		-	-	-	-	lastReqDt	Last Request Date	CHAR	Y	14
JSON SAMPLE										
{“tin”:”A123456789Z”,”bhfId”:”00”,”lastReqDt”:”20180520000000”}										

※ 'lastReqDt' is the search condition. Based on the '**lastReqDt**' of date Argument, the server provides code registered or modified after the date.

Object						Attribute						
Object ID	Object Name	Sub Object_1		Sub Object_2		Attribute ID	Attribute Name	Data Type	Required	Data Length		
		Object ID	Object Name	Object ID	Object Name							
CodeSearchRes	Search code Response	-	-	-	-	resultCd	Result Code	CHAR		3		
		-	-	-	-	resultMsg	Result Message	CHAR				
		-	-	-	-	resultDt	Result Date	CHAR		14		
		CodeCls <List>	Code classification information	-	-	-	-	cdCls	Code Class	CHAR		2
				-	-	-	-	cdClsNm	Code Class Name	CHAR		60
				-	-	-	-	cdClsDesc	Code Class Description	CHAR		500
				-	-	-	-	userDfnNm1	User Define Name 1	CHAR		60
				-	-	-	-	userDfnNm2	User Define Name 2	CHAR		60
-	-	-	-	userDfnNm3	User Define Name 3	CHAR		60				

Tulipe Ushuru, Tujitegemee!

ISO 9001:2015 CERTIFIED

Object						Attribute				
Object ID	Object Name	Sub Object_1		Sub Object_2		Attribute ID	Attribute Name	Data Type	Required	Data Length
		Object ID	Object Name	Object ID	Object Name					
						useYn	Use Yes or No	CHAR		1
				Code <List>	Code Details information	cd	Code	CHAR		5
						cdNm	Code Name	CHAR		60
						cdDesc	Code Description	CHAR		500
						srtOrd	Sort Order	NUMBER		5
						userDfnCd1	User Define Code 1	CHAR		20
						userDfnCd2	User Define Code 2	CHAR		20
						userDfnCd3	User Define Code 3	CHAR		20
						useYn	Use Yes or No	CHAR		1

JSON SAMPLE

```
{
  "resultCd": "000",
  "resultMsg": "It is succeeded",
  "resultDt": "20200226143506",
  "data": {
    "clsList": [
      {
        "cdCls": "04",
        "cdClsNm": "Taxation",
        "cdClsDesc": "Taxation",
        "cdClsNm1": "Taxation",
        "cdClsDesc1": "Taxation",
        "cdClsNm2": "Taxation",
        "cdClsDesc2": "Taxation",
        "cdClsNm3": "Taxation",
        "cdClsDesc3": "Taxation",
        "cdClsNm4": "Taxation",
        "cdClsDesc4": "Taxation",
        "cdClsNm5": "Taxation",
        "cdClsDesc5": "Taxation",
        "cdClsNm6": "Taxation",
        "cdClsDesc6": "Taxation",
        "cdClsNm7": "Taxation",
        "cdClsDesc7": "Taxation",
        "cdClsNm8": "Taxation",
        "cdClsDesc8": "Taxation",
        "cdClsNm9": "Taxation",
        "cdClsDesc9": "Taxation",
        "cdClsNm10": "Taxation",
        "cdClsDesc10": "Taxation",
        "cdClsNm11": "Taxation",
        "cdClsDesc11": "Taxation",
        "cdClsNm12": "Taxation",
        "cdClsDesc12": "Taxation",
        "cdClsNm13": "Taxation",
        "cdClsDesc13": "Taxation",
        "cdClsNm14": "Taxation",
        "cdClsDesc14": "Taxation",
        "cdClsNm15": "Taxation",
        "cdClsDesc15": "Taxation",
        "cdClsNm16": "Taxation",
        "cdClsDesc16": "Taxation",
        "cdClsNm17": "Taxation",
        "cdClsDesc17": "Taxation",
        "cdClsNm18": "Taxation",
        "cdClsDesc18": "Taxation",
        "cdClsNm19": "Taxation",
        "cdClsDesc19": "Taxation",
        "cdClsNm20": "Taxation",
        "cdClsDesc20": "Taxation",
        "cdClsNm21": "Taxation",
        "cdClsDesc21": "Taxation",
        "cdClsNm22": "Taxation",
        "cdClsDesc22": "Taxation",
        "cdClsNm23": "Taxation",
        "cdClsDesc23": "Taxation",
        "cdClsNm24": "Taxation",
        "cdClsDesc24": "Taxation",
        "cdClsNm25": "Taxation",
        "cdClsDesc25": "Taxation",
        "cdClsNm26": "Taxation",
        "cdClsDesc26": "Taxation",
        "cdClsNm27": "Taxation",
        "cdClsDesc27": "Taxation",
        "cdClsNm28": "Taxation",
        "cdClsDesc28": "Taxation",
        "cdClsNm29": "Taxation",
        "cdClsDesc29": "Taxation",
        "cdClsNm30": "Taxation",
        "cdClsDesc30": "Taxation",
        "cdClsNm31": "Taxation",
        "cdClsDesc31": "Taxation",
        "cdClsNm32": "Taxation",
        "cdClsDesc32": "Taxation",
        "cdClsNm33": "Taxation",
        "cdClsDesc33": "Taxation",
        "cdClsNm34": "Taxation",
        "cdClsDesc34": "Taxation",
        "cdClsNm35": "Taxation",
        "cdClsDesc35": "Taxation",
        "cdClsNm36": "Taxation",
        "cdClsDesc36": "Taxation",
        "cdClsNm37": "Taxation",
        "cdClsDesc37": "Taxation",
        "cdClsNm38": "Taxation",
        "cdClsDesc38": "Taxation",
        "cdClsNm39": "Taxation",
        "cdClsDesc39": "Taxation",
        "cdClsNm40": "Taxation",
        "cdClsDesc40": "Taxation",
        "cdClsNm41": "Taxation",
        "cdClsDesc41": "Taxation",
        "cdClsNm42": "Taxation",
        "cdClsDesc42": "Taxation",
        "cdClsNm43": "Taxation",
        "cdClsDesc43": "Taxation",
        "cdClsNm44": "Taxation",
        "cdClsDesc44": "Taxation",
        "cdClsNm45": "Taxation",
        "cdClsDesc45": "Taxation",
        "cdClsNm46": "Taxation",
        "cdClsDesc46": "Taxation",
        "cdClsNm47": "Taxation",
        "cdClsDesc47": "Taxation",
        "cdClsNm48": "Taxation",
        "cdClsDesc48": "Taxation",
        "cdClsNm49": "Taxation",
        "cdClsDesc49": "Taxation",
        "cdClsNm50": "Taxation",
        "cdClsDesc50": "Taxation",
        "cdClsNm51": "Taxation",
        "cdClsDesc51": "Taxation",
        "cdClsNm52": "Taxation",
        "cdClsDesc52": "Taxation",
        "cdClsNm53": "Taxation",
        "cdClsDesc53": "Taxation",
        "cdClsNm54": "Taxation",
        "cdClsDesc54": "Taxation",
        "cdClsNm55": "Taxation",
        "cdClsDesc55": "Taxation",
        "cdClsNm56": "Taxation",
        "cdClsDesc56": "Taxation",
        "cdClsNm57": "Taxation",
        "cdClsDesc57": "Taxation",
        "cdClsNm58": "Taxation",
        "cdClsDesc58": "Taxation",
        "cdClsNm59": "Taxation",
        "cdClsDesc59": "Taxation",
        "cdClsNm60": "Taxation",
        "cdClsDesc60": "Taxation",
        "cdClsNm61": "Taxation",
        "cdClsDesc61": "Taxation",
        "cdClsNm62": "Taxation",
        "cdClsDesc62": "Taxation",
        "cdClsNm63": "Taxation",
        "cdClsDesc63": "Taxation",
        "cdClsNm64": "Taxation",
        "cdClsDesc64": "Taxation",
        "cdClsNm65": "Taxation",
        "cdClsDesc65": "Taxation",
        "cdClsNm66": "Taxation",
        "cdClsDesc66": "Taxation",
        "cdClsNm67": "Taxation",
        "cdClsDesc67": "Taxation",
        "cdClsNm68": "Taxation",
        "cdClsDesc68": "Taxation",
        "cdClsNm69": "Taxation",
        "cdClsDesc69": "Taxation",
        "cdClsNm70": "Taxation",
        "cdClsDesc70": "Taxation",
        "cdClsNm71": "Taxation",
        "cdClsDesc71": "Taxation",
        "cdClsNm72": "Taxation",
        "cdClsDesc72": "Taxation",
        "cdClsNm73": "Taxation",
        "cdClsDesc73": "Taxation",
        "cdClsNm74": "Taxation",
        "cdClsDesc74": "Taxation",
        "cdClsNm75": "Taxation",
        "cdClsDesc75": "Taxation",
        "cdClsNm76": "Taxation",
        "cdClsDesc76": "Taxation",
        "cdClsNm77": "Taxation",
        "cdClsDesc77": "Taxation",
        "cdClsNm78": "Taxation",
        "cdClsDesc78": "Taxation",
        "cdClsNm79": "Taxation",
        "cdClsDesc79": "Taxation",
        "cdClsNm80": "Taxation",
        "cdClsDesc80": "Taxation",
        "cdClsNm81": "Taxation",
        "cdClsDesc81": "Taxation",
        "cdClsNm82": "Taxation",
        "cdClsDesc82": "Taxation",
        "cdClsNm83": "Taxation",
        "cdClsDesc83": "Taxation",
        "cdClsNm84": "Taxation",
        "cdClsDesc84": "Taxation",
        "cdClsNm85": "Taxation",
        "cdClsDesc85": "Taxation",
        "cdClsNm86": "Taxation",
        "cdClsDesc86": "Taxation",
        "cdClsNm87": "Taxation",
        "cdClsDesc87": "Taxation",
        "cdClsNm88": "Taxation",
        "cdClsDesc88": "Taxation",
        "cdClsNm89": "Taxation",
        "cdClsDesc89": "Taxation",
        "cdClsNm90": "Taxation",
        "cdClsDesc90": "Taxation",
        "cdClsNm91": "Taxation",
        "cdClsDesc91": "Taxation",
        "cdClsNm92": "Taxation",
        "cdClsDesc92": "Taxation",
        "cdClsNm93": "Taxation",
        "cdClsDesc93": "Taxation",
        "cdClsNm94": "Taxation",
        "cdClsDesc94": "Taxation",
        "cdClsNm95": "Taxation",
        "cdClsDesc95": "Taxation",
        "cdClsNm96": "Taxation",
        "cdClsDesc96": "Taxation",
        "cdClsNm97": "Taxation",
        "cdClsDesc97": "Taxation",
        "cdClsNm98": "Taxation",
        "cdClsDesc98": "Taxation",
        "cdClsNm99": "Taxation",
        "cdClsDesc99": "Taxation",
        "cdClsNm100": "Taxation",
        "cdClsDesc100": "Taxation"
      }
    ],
    "dtlList": [
      {
        "cd": "A",
        "cdNm": "A-EX",
        "cdDesc": "...",
        "useYn": "Y",
        "srtOrd": 1,
        "userDfnCd1": "o",
        "userDfnCd2": null,
        "userDfnCd3": null,
        "cd": "B",
        "cdNm": "B-18.00%",
        "cdDesc": "B-18.00%",
        "useYn": "Y",
        "srtOrd": 2,
        "userDfnCd1": "18",
        "userDfnCd2": null,
        "userDfnCd3": null,
        "cd": "C",
        "cdNm": "C",
        "cdDesc": "C",
        "useYn": "Y",
        "srtOrd": 3,
        "userDfnCd1": "o",
        "userDfnCd2": null,
        "userDfnCd3": null,
        "cd": "D",
        "cdNm": "D",
        "cdDesc": "D",
        "useYn": "Y",
        "srtOrd": 4,
        "userDfnCd1": "o",
        "userDfnCd2": null,
        "userDfnCd3": null
      }
    ]
  }
}
```

※ 'resultCd' is response code. The resultCd 000 means 'It is succeeded'. For more information, refer to '4.17. API Response Code'.

3.3.2.2 CustSearchReq/Res

This part describes the Customer API function (url : /selectCustomer) and data types for each item. The Customer means the taxpayer. API functions are divided into 'Request:Argument' and 'Response:Return Object'. The **CustSearchReq** is an Argument **Object of Request**, The **CustSearchRes** is a Return **Object of Response**. Based on the 'custmTin', the server provides customer information registered to the provided PIN.

Object						Attribute					
Object ID	Object Name	Sub Object_1		Sub Object_2		Attribute ID	Attribute Name	Data Type	Required	Data Length	Format
		Object ID	Object Name	Object ID	Object Name						
CustSearc	Search					tin	PIN	CHAR	Y	11	

Tulipe Ushuru, Tujitegemee!

ISO 9001:2015 CERTIFIED

hReq	Customer Request					bhfid	Branch ID	CHAR	Y	2	
						cmckey	Communication Key	CHAR	Y	255	
						custmTin	Customer PIN	CHAR	Y	11	

JSON SAMPLE

```
{"tin": "A123456789Z", "bhfid": "00", "custmTin": "A123456789Z" }
```

Object						Attribute							
Object ID	Object Name	Sub Object_1		Sub Object_2		Attribute ID	Attribute Name	Data Type	Required	Data Length	Format		
		Object ID	Object Name	Object ID	Object Name								
CustSearchRes	Search Customer Response					resultCd	Result Code	CHAR		3			
						resultMsg	Result Message	CHAR					
						resultDt	Result Date	CHAR		14			
		Cust	Taxpayer information					tin	Taxpayer PIN	CHAR		11	
								taxprNm	Taxpayer Name	CHAR		60	
								taxprSttsCd	Taxpayer Status Code	CHAR		5	See '4.2. Taxpayer Status'
								prvncNm	County Name	CHAR		100	
								dstrtnm	Sub-County Name	CHAR		100	
				sctrNm	Tax Locality Name	CHAR		100					
				locDesc	Location Description	CHAR		100					

JSON SAMPLE

```
{"resultCd": "000", "resultMsg": "It is succeeded", "resultDt": "20200226192053", "data": {"custList": [{"tin": "A123456789Z", "taxprNm": "TAXPAYER1", "taxprSttsCd": "A", "prvncNm": "NAIROBI CITY", "dstrtnm": "WESTLANDS", "sctrNm": "WON", "locDesc": " Westlands Towers"}]}}
```

Tulipe Ushuru, Tujitegemee!

3.3.2.3 NoticeSearchReq/Res

This part describes the components of Notice API function(url : /**selectNoticeList**) and data types for each item. This API function is divided into 'Request: Argument' and '**Response: Return Object**'. The **NoticeSearchReq** is an Argument Object of Request, The **NoticeSearchRes** is a Return **Object of Response**.

Object				Attribute				
Object ID	Object Name	Sub Object_1		Attribute ID	Attribute Name	Data Type	Required	Data Length
		Object ID	Object Name					
NoticeSearchReq	Search Notice Request			tin	Taxpayer PIN	CHAR	Y	11
				bhflId	Branch user ID	CHAR	Y	2
				cmcKey	Communication Key	CHAR	Y	255
				lastReqDt	Last Request date time	CHAR	Y	14
JSON SAMPLE								
{“tin”:"A123456789Z”,“bhflId”:"00”,“lastReqDt”:"20200218191141”}								

Object				Attribute						
Object ID	Object Name	Sub Object_1		Attribute ID	Attribute Name	Data Type	Required	Data Length		
		Object ID	Object Name							
NoticeSearchRes	Search Notice Response			resultCd	Result Code	CHAR		3		
				resultMsg	Result Message	CHAR				
				resultDt	Result Date time	CHAR		14		
		Notice<List>	Search Information			noticeNo	Notice Number	NUMBER		
						title	Title	CHAR		1000
						cont	Contents	CHAR		4000
						dttlUrl	detail URL	CHAR		200
						regrNm	Registration name	CHAR		60
		regDt	Registration date time	CHAR		14				
JSON SAMPLE										
{“resultCd”:"000”,“resultMsg”:"It is succeeded”,“resultDt”:"20200226191722”,“data”:{“noticeList”:[{“noticeNo”:42,“title”:"Notice Test [2020.02.18]”,“cont”:"Notice Test [2020.02.18]”}]}“r\n\r\nNotice Test										

Tulipe Ushuru, Tujitegemee!

[2020.02.18],"dtlUrl":"http://localhost:9980/common/link/ebm/receipt/indexEbmNotice?noticeNo=42","regNm":"Administrator","regDt":"20200218191141"}]}

Tulipe Ushuru, Tujitegemee!

3.3.3 Item Information

3.3.3.1 ItemClsSearchReq/Res

This part describes the item API function (url : /selectItemClsList) of product classification and data types for each item. API functions are divided into 'Request:Argument' and 'Response:Return Object'. The **ItemClsSearchReq** is an Argument Object of **Request**, The **ItemClsSearchRes** is a Return Object of **Response**.

Object				Attribute					
Object ID	Object Name	Sub Object_1		Attribute ID	Attribute Name	Data Type	Required	Data Length	Format
		Object ID	Object Name						
ItemClsSearchReq	Search Classification Request			tin	PIN	CHAR	Y	11	
				bhfId	Branch ID	CHAR	Y	2	
				cmcKey	Communication Key	CHAR	Y	255	
				lastReqDt	Last Request Date	CHAR	Y	14	Ex:20190412092700
JSON SAMPLE									
{“tin”:“A123456789Z”,“bhfId”:“00”,“lastReqDt”:“20180523000000”}									

Object				Attribute							
Object ID	Object Name	Sub Object_1		Attribute ID	Attribute Name	Data Type	Required	Data Length	Format		
		Object ID	Object Name								
ItemClsSearchRes	Search Classification Response			resultCd	Result Code	CHAR		3			
				resultMsg	Result Message	CHAR					
				resultDt	Result Date	CHAR		14			
		ItemCls<List>	Item classification information			itemClsCd	Item Class Code	CHAR		10	
						itemClsNm	Item Class Name	CHAR		200	
						itemClsLvl	Item Class Level	NUMBER			
						taxTyCd	Taxation Type Code	CHAR		5	See'4.1 Tax Type'

Tulipe Ushuru, Tujitegemee!

ISO 9001:2015 CERTIFIED

				mjrTgYn	Whether it is Major Taget	CHAR		1	
				useYn	Used / UnUsed	CHAR		1	

JSON SAMPLE

```
{
  "resultCd": "000",
  "resultMsg": "It is succeeded",
  "resultDt": "20200226185625",
  "data": {
    "itemClsList": [
      {
        "itemClsCd": "14111400",
        "itemClsNm": "Paper",
        "products": "no",
        "use": "no"
      },
      {
        "itemClsCd": "14111401",
        "itemClsNm": "Paper",
        "products": "no",
        "use": "use"
      },
      {
        "itemClsCd": "3133130600",
        "itemClsNm": "Non metallic sonic welded structural",
        "products": "sonic",
        "use": "welded"
      }
    ]
  }
}
```

3.3.3.2 ItemSaveReq/Res

This part describes the components of SaveItem API function (url : /**saveItem**) and data types for each item. This API function is divided into 'Request: Argument' and 'Response: Return Object'. The **ItemSaveReq** is an Argument Object of Request, The **ItemSaveRes** is a Return Object of **Response**.

Object						Attribute					
Object ID	Object Name	Sub Object_1		Sub Object_2		Attribute ID	Attribute Name	Data Type	Required	Data Length	Format
		Object ID	Object Name	Object ID	Object Name						
ItemSaveReq	Save Item Request					tin	PIN	CHAR	Y	11	
						bhfid	Branch ID	CHAR	Y	2	
						cmcKey	Communication Key	CHAR	Y	255	
						itemClsCd	Item Code	CHAR	Y	10	
						itemCd	Item Classification Code	CHAR	Y	20	See '4.18. Item code'
						itemTyCd	item Type Code	CHAR	Y	5	See '4.3. Product type'
						itemStdNm	Item Standard Name	CHAR	N	200	
						orgnNatCd	Origin Place Code (Nation)	CHAR	Y	5	See '4.4. Nation'
						pkgUnitCd	Packaging Unit	CHAR	Y	5	See '4.5.'

Tulipe Ushuru, Tujitegemee!

ISO 9001:2015 CERTIFIED

Object						Attribute					
Object ID	Object Name	Sub Object_1		Sub Object_2		Attribute ID	Attribute Name	Data Type	Required	Data Length	Format
		Object ID	Object Name	Object ID	Object Name						
							Code				Packaging Unit'
						qtyUnitCd	Quantity Unit Code	CHAR	Y	5	See '4.6. Unit of Quantity'
						taxTyCd	Taxation Type Code	CHAR	Y	5	See '4.1. Tax Type'
						btchNo	Batch Number	CHAR	N	10	
						bcd	Barcode	CHAR	N	20	
						dftPrc	Default Price Unit	NUMBER	Y	18,2	
						grpPrcL1	Group1 Price Unit	NUMBER	N	18,2	
						grpPrcL2	Group2 Price Unit	NUMBER	N	18,2	
						grpPrcL3	Group3 Price Unit	NUMBER	N	18,2	
						grpPrcL4	Group4 Price Unit	NUMBER	N	18,2	
						grpPrcL5	Group5 Price Unit	NUMBER	N	18,2	
						addInfo	Additional Information	CHAR	N	7	
						sftyQty	Safty Quantity	NUMBER	N	13,2	
						isrcAplcbYn	Insurance Applicable(Y/N)	CHAR	Y	1	
						useYn	Used / UnUsed	CHAR	Y	1	
						regrId	Registration ID	CHAR	Y	20	
						regrNm	Registration Name	CHAR	Y	60	
						modrId	Modifier ID	CHAR	Y	20	
						modrNm	Modifier Name	CHAR	Y	60	

Tulipe Ushuru, Tujitegemee!

ISO 9001:2015 CERTIFIED

Object						Attribute					
Object ID	Object Name	Sub Object_1		Sub Object_2		Attribute ID	Attribute Name	Data Type	Required	Data Length	Format
		Object ID	Object Name	Object ID	Object Name						
JSON SAMPLE											
<pre>{ "tin": "A123456789Z", "bhfid": "00", "itemCd": "KE1NTXU0000006", "itemClsCd": "5059690800", "itemTyCd": "1", "itemNm": "test material item", "itemStdNm": null, "orgnNatCd": "KE", "pkgUnitCd": "NT", "qtyUnitCd": "U", "taxTyCd": "B", "btchNo": null, "bcd": null, "dftPrc": 3500, "grpPrcL1": 3500, "grpPrcL2": 3500, "grpPrcL3": 3500, "grpPrcL4": 3500, "grpPrcL5": null, "addInfo": null, "sftyQty": null, "srcAplcbYn": "N", "useYn": "Y", "regrId": "Test", "regrNm": "Test", "modrId": "Test", "modrNm": "Test" }</pre>											

Object						Attribute					
Object ID	Object Name	Sub Object_1		Sub Object_2		Attribute ID	Attribute Name	Data Type	Required	Data Length	Format
		Object ID	Object Name	Object ID	Object Name						
ItemSaveRes	Save Item Response					resultCd	Result Code	CHAR		3	
						resultMsg	Result Message	CHAR			
						resultDt	Result Date	CHAR		14	
JSON SAMPLE											
<pre>{"resultCd": "000", "resultMsg": "It is succeeded", "resultDt": "20200226193918", "data": null}</pre>											

Tulipe Ushuru, Tujitegemee!

3.3.3.3 ItemSearchReq/Res

This part describes the components of SelectItemList API function (url : /**selectItemList**) and data types for each item. This API function is divided into 'Request: Argument' and 'Response: Return Object'. The **ItemSearchReq** is an Argument Object of **Request**, The **ItemSearchRes** is a Return Object of **Response**.

Object						Attribute					
Object ID	Object Name	Sub Object_1		Sub Object_2		Attribute ID	Attribute Name	Data Type	Required	Data Length	Format
		Object ID	Object Name	Object ID	Object Name						
ItemSearchReq	Search Item Request					tin	PIN	CHAR	Y	11	
						bhfId	Branch ID	CHAR	Y	2	
						cmcKey	Communication Key	CHAR	Y	255	
						lastReqDt	Last Request Date	CHAR	Y	14	

JSON SAMPLE

```
{“tin”:”A123456789Z”,”bhfId”:”00”,”lastReqDt”:”20160523000000”}
```

※ **bhfId** is branch ID. '00' means **head office**, **01~n** is **branch office**.

Object						Attribute					
Object ID	Object Name	Sub Object_1		Sub Object_2		Attribute ID	Attribute Name	Data Type	Required	Data Length	Format
		Object ID	Object Name	Object ID	Object Name						
ItemSearchRes	Search Item Response					resultCd	Result Code	CHAR		3	
						resultMsg	Result Message	CHAR			
						resultDt	Result Date	CHAR		14	
				Item <List>	Item information			tin	PIN	CHAR	
						itemClsCd	Item Classification Code	CHAR		10	
						itemCd	Item Code	CHAR		20	
						itemTyCd	Item Type Code	CHAR		5	See'4.3. Product type'

Tulipe Ushuru, Tujitegemee!

ISO 9001:2015 CERTIFIED

Object						Attribute					
Object ID	Object Name	Sub Object_1		Sub Object_2		Attribute ID	Attribute Name	Data Type	Required	Data Length	Format
		Object ID	Object Name	Object ID	Object Name						
						itemNm	item Name	CHAR		200	
						itemStdNm	Item Standard Name	CHAR		200	
						orgnNatCd	Origin Place Code (Nation)	CHAR		5	See '4.4. Nation'
						pkgUnitCd	Packaging Unit Code	CHAR		5	See '4.5. Packaging Unit'
						qtyUnitCd	Quantity Unit Code	CHAR		5	See '4.6. Unit of Quantity'
						taxTyCd	Taxation Type Code	CHAR		5	See '4.1. Tax Type'
						btchNo	Batch Number	CHAR		10	
						regBhflD	Regist Branch Office ID	CHAR		2	
						bcd	Barcode	CHAR		20	
						dftPrc	Default Unit Price	NUMBER		18,2	
						grpPrcL1	Group1 Unit Price	NUMBER		18,2	
						grpPrcL2	Group2 Unit Price	NUMBER		18,2	
						grpPrcL3	Group3 Unit Price	NUMBER		18,2	
						grpPrcL4	Group4 Unit Price	NUMBER		18,2	
						grpPrcL5	Group5 Unit Price	NUMBER		18,2	
						addInfo	Add Information	CHAR		7	
						sftyQty	Safty Quantity	NUMBER		13,2	
						isrcApleb	Insurance	CHAR		1	

Tulipe Ushuru, Tujitegemee!

ISO 9001:2015 CERTIFIED

Object						Attribute					
Object ID	Object Name	Sub Object_1		Sub Object_2		Attribute ID	Attribute Name	Data Type	Required	Data Length	Format
		Object ID	Object Name	Object ID	Object Name						
						Yn	Applicable Y/N				
						rraModYn	KRA Modify Y/N (Item Classification Code)	CHAR		1	
						useYn	Used / UnUsed	CHAR		1	
JSON SAMPLE											
<pre>{ "resultCd": "000", "resultMsg": "It succeeded", "resultDt": "20200226193501", "data": { "itemList": [{ "tin": "A123456789Z", "itemCd": "KR2AMXBLL0000001", "itemClsCd": "1110160600", "itemTyCd": "2", "itemNm": "rest item#1", "itemStdNm": null, "orgnNatCd": "KR", "pkgUnitCd": "AM", "qtyUnitCd": "BLL", "taxTyCd": "B", "btchNo": null, "regBhfid": "00", "bcd": "8801234567061", "dftPrc": 21000, "grpPrcL1": 0, "grpPrcL2": 0, "grpPrcL3": 0, "grpPrcL4": 0, "grpPrcL5": 0, "addInfo": null, "sftyQty": 0, "isrcAplcbYn": "N", "rraModYn": "N", "useYn": "Y" }, { "tin": "A123456789Z", "itemCd": "KR2AMXCAX0000001", "itemClsCd": "1110170400", "itemTyCd": "2", "itemNm": "coke1", "itemStdNm": null, "orgnNatCd": "KR", "pkgUnitCd": "AM", "qtyUnitCd": "CA", "taxTyCd": "B", "btchNo": null, "regBhfid": "00", "bcd": "8801234567891", "dftPrc": 5000, "grpPrcL1": 0, "grpPrcL2": 0, "grpPrcL3": 0, "grpPrcL4": 0, "grpPrcL5": 0, "addInfo": null, "sftyQty": 0, "isrcAplcbYn": "Y", "rraModYn": "N", "useYn": "Y" }] } }</pre>											

Tulipe Ushuru, Tujitegemee!

3.3.4 Branch Information

3.3.4.1 BhfSearchReq/Res

This part describes the components of API function(url : /selectBhfList) and data types for each item. This API function is divided into 'Request: Argument' and 'Response: Return Object'. The **BhfSearchReq** is an Argument Object of Request, The **BhfSearchRes** is a Return Object of Response.

Object						Attribute				
Object ID	Object Name	Sub Object_1		Sub Object_2		Attribute ID	Attribute Name	Data Type	Required	Data Length
		Object ID	Object Name	Object ID	Object Name					
BhfSearchReq	Search Branch Request					tin	PIN	CHAR	Y	11
						bhfId	Branch ID	CHAR	Y	2
						cmcKey	Communication Key	CHAR	Y	255
						lastReqDt	Last Request Date	CHAR	Y	14
JSON SAMPLE										
{“tin”:”A123456789Z”,”bhfId”:”00”,”lastReqDt”:”20191130000000”}										

Object						Attribute						
Object ID	Object Name	Sub Object_1		Sub Object_2		Attribute ID	Attribute Name	Data Type	Required	Data Length		
		Object ID	Object Name	Object ID	Object Name							
BhfSearchRes	Search Branch Response					resultCd	Result Code	CHAR		3		
						resultMsg	Result Message	CHAR				
						resultDt	Result Date	CHAR		14		
		Bhf <List>	Branch Information					tin	PIN	CHAR		11
								bhfId	Branch Office ID	CHAR		2
								bhfNm	Branch Office Name	CHAR		60
								bhfSttsCd	Branch Status Code	CHAR		5
								prvncNm	County Name	CHAR		100
				dstrtNm	Sub-County Name	CHAR		100				

Tulipe Ushuru, Tujitegemee!

Object						Attribute				
Object ID	Object Name	Sub Object_1		Sub Object_2		Attribute ID	Attribute Name	Data Type	Required	Data Length
		Object ID	Object Name	Object ID	Object Name					
						sctrNm	Tax Locality Name	CHAR		100
						locDesc	Location Description	CHAR		100
						mgrNm	Manager Name	CHAR		60
						mgrTelNo	Manager Contact	CHAR		20
						mgrEmail	Manager Email	CHAR		100
						hqYn	Head Office Yes/No	CHAR		1

JSON SAMPLE

```
{
  "resultCd": "000",
  "resultMsg": "It succeeded",
  "resultDt": "20200226193023",
  "data": {
    "bhfList": [
      {
        "tin": "A123456789Z",
        "bhfId": "00",
        "bhfNm": "Headquater",
        "bhfSttsCd": "01",
        "prvncNm": "NAIROBI CITY",
        "dstrtNm": "WESTLANDS",
        "sctrNm": "WON",
        "locDesc": "Westlands Towers",
        "mgrNm": "manage1130_00",
        "mgrTelNo": "0789001130",
        "mgrEmail": "manage113000@test.com",
        "hqYn": "Y"
      },
      {
        "tin": "A123456789Z",
        "bhfId": "01",
        "bhfNm": "Branch01",
        "bhfSttsCd": "01",
        "prvncNm": "NAIROBI CITY",
        "dstrtNm": "WESTLANDS",
        "sctrNm": "WON",
        "locDesc": "Westlands Towers",
        "mgrNm": "manage1130_01",
        "mgrTelNo": "0789011130",
        "mgrEmail": "manage113001@test.com",
        "hqYn": "N"
      }
    ]
  }
}
```

3.3.4.2 BhfCustSaveReq/Res

This part describes the components of branch customer API function(url : **/saveBhfCustomer**) and data types for each item. This API function is divided into 'Request: Argument' and 'Response: Return Object'. The **BhfCustSaveReq** is an Argument Object of Request, The **BhfCustSaveRes** is a Return Object of Response.

Object						Attribute				
Object ID	Object Name	Sub Object_1		Sub Object_2		Attribute ID	Attribute Name	Data Type	Required	Data Length
		Object ID	Object Name	Object ID	Object Name					
BhfCustSaveReq	Store branch customers Request					tin	PIN	CHAR	Y	11
						bhfId	Branch ID	CHAR	Y	2
						cmcKey	Communication Key	CHAR	Y	255
						custNo	Customer Number	CHAR	Y	9
						custTin	Customer PIN	CHAR	Y	11
						custNm	Customer Name	CHAR	Y	60

Tulipe Ushuru, Tujitegeme!

ISO 9001:2015 CERTIFIED

Object						Attribute				
Object ID	Object Name	Sub Object_1		Sub Object_2		Attribute ID	Attribute Name	Data Type	Required	Data Length
						adrs	Address	CHAR	N	300
						telNo	Contact	CHAR	N	20
						email	Email	CHAR	N	50
						faxNo	Fax Number	CHAR	N	20
						useYn	Used (Y/N)	CHAR	Y	1
						remark	Remark	CHAR	N	1000
						regrId	Registration ID	CHAR	Y	20
						regrNm	Registration Name	CHAR	Y	60
						modrId	Modifier ID	CHAR	Y	20
						modrNm	Modifier Name	CHAR	Y	60
JSON SAMPLE										
{"tin":"A123456789Z","bhfId":"00","custNo":"999991113","custTin":"A123456789Z","custNm":"Taxpayer1113","adrs":null,"telNo":null,"email":null,"faxNo":null,"useYn":"Y","remark":null,"regrId":"Test","regrNm":"Test","modrId":"Test","modrNm":"Test"}										

Object						Attribute				
Object ID	Object Name	Sub Object_1		Sub Object_2		Attribute ID	Attribute Name	Data Type	Required	Data Length
		Object ID	Object Name	Object ID	Object Name					
BhfCustSaveRes	Store branch customers Response					resultCd	Result Code	CHAR		3
						resultMsg	Result Message	CHAR		
						resultDt	Result Date	CHAR		14
JSON SAMPLE										
{"resultCd":"000","resultMsg":"It is succeeded","resultDt":"20200226193115","data":null}										

Tulipe Ushuru, Tujitegemee!

3.3.4.3 BhfUserSaveReq/Res

This part describes the components of branch user account API function (url /**saveBhfUser**) and data types for each item. This function send branch user(employee) account to server and stores it. This API function is divided into 'Request: Argument' and 'Response: Return Object'. The **BhfUserSaveReq** is an Argument Object of **Request**, The **BhfUserSaveRes** is a Return Object of **Response**.

Object						Attribute				
Object ID	Object Name	Sub Object_1		Sub Object_2		Attribute ID	Attribute Name	Data Type	Required	Data Length
		Object ID	Object Name	Object ID	Object Name					
BhfUserSaveReq	Save Branch User Request					tin	PIN	CHAR	Y	11
						bhfId	Branch ID	CHAR	Y	2
						cmcKey	Communication Key	CHAR	Y	255
						userId	User ID	CHAR	Y	20
						userNm	User Name	CHAR	Y	60
						pwd	Password	CHAR	Y	255
						adrs	Address	CHAR	N	200
						cntc	Contact	CHAR	N	20
						authCd	Authority Code	CHAR	N	100
						remark	Remark	CHAR	N	2000
						useYn	Used / UnUsed	CHAR	Y	1
						regrId	Registration ID	CHAR	Y	20
						regrNm	Registration Name	CHAR	Y	60
						modrId	Modifier ID	CHAR	Y	20
				modrNm	Modifier Name	CHAR	Y	60		
JSON SAMPLE										
{"tin": "A123456789Z", "bhfId": "00", "userId": "userId3", "userNm": "User Name3", "pwd": "12341234", "adrs": null, "cntc": null, "authCd": null, "remark": null, "useYn": "Y", "regrId": "Test", "regrNm": "Test", "modrId": "Test", "modrNm": "Test"}										

Object	Attribute
--------	-----------

Tulipe Ushuru, Tujitegemee!

ISO 9001:2015 CERTIFIED

Object ID	Object Name	Sub Object_1		Sub Object_2		Attribute ID	Attribute Name	Data Type	Required	Data Length
		Object ID	Object Name	Object ID	Object Name					
BhfUserSaveRes	Save Branch User Response					resultCd	Result Code	CHAR		3
						resultMsg	Result Message	CHAR		
						resultDt	Result Date	CHAR		14

JSON SAMPLE

```
{"resultCd":"000","resultMsg":"It is succeeded","resultDt":"20200226192427","data":null}
```

3.3.4.4 BhfInsuranceSaveReq/Res

This part describes the components of branch Insurance API function (url : /save**BhfInsurance**) and data types for each item. This function sends the insurance company information to server and stores it. The insurance company information are insurance code, insurance name and insurance rate. This API function is divided into 'Request: Argument' and 'Response: Return Object'. The **BhfInsuranceSaveReq** is an Argument Object of **Request**, The **BhfInsuranceSaveRes** is a Return Object of **Response**.

Object						Attribute				
Object ID	Object Name	Sub Object_1		Sub Object_2		Attribute ID	Attribute Name	Data Type	Required	Data Length
		Object ID	Object Name	Object ID	Object Name					
BhfInsuranceSaveReq	Save Insurance Branch Request					tin	PIN	CHAR	Y	11
						bhfId	Branch ID	CHAR	Y	2
						cmcKey	Communication Key	CHAR	Y	255
						isrccCd	Insurance Code	CHAR	Y	10
						isrccNm	Insurance Name	CHAR	Y	100
						isrcRt	Premium Rate	NUMBER	Y	3
						useYn	Used / UnUsed	CHAR	Y	1
						regrId	Registration ID	CHAR	Y	20
						regrNm	Registration Name	CHAR	Y	60
						modrId	Modifier ID	CHAR	Y	20

Tulipe Ushuru, Tujitegeme!

Object						Attribute				
Object ID	Object Name	Sub Object_1		Sub Object_2		Attribute ID	Attribute Name	Data Type	Required	Data Length
		Object ID	Object Name	Object ID	Object Name					
BhfInsuranceSaveRes	Save Insurance Branch Response					resultCd	Result Code	CHAR		3
						resultMsg	Result Message	CHAR		
						resultDt	Result Date	CHAR		14
JSON SAMPLE										
{“tin”:”A123456789Z”,”bhfid”:”oo”,”isrccCd”:”ISRCCo1”,”isrccNm”:”ISRCC NAME”,”isrccRt”:20,”useYn”:”Y”,”regrId”:”Test”,”regrNm”:”Test”,”modrId”:”Test”,”modrNm”:”Test”}										

Object						Attribute				
Object ID	Object Name	Sub Object_1		Sub Object_2		Attribute ID	Attribute Name	Data Type	Required	Data Length
		Object ID	Object Name	Object ID	Object Name					
						resultCd	Result Code	CHAR		3
						resultMsg	Result Message	CHAR		
						resultDt	Result Date	CHAR		14
JSON SAMPLE										
{”resultCd”:”ooo”,”resultMsg”:”It is succeeded”,”resultDt”:”20200226192852”,”data”:null}										

3.3.5 Import Item Information

3.3.5.1 ImportItemSearchReq/Res

This part describes the components of SelectImportItem API function (url : /**selectImportItemList**) and data types for each item. This API function is divided into 'Request: Argument' and 'Response: Return Object'. The **ImportItemReq** is an Argument Object of Request, The **ImportItemRes** is a Return Object of Response.

Object						Attribute					
Object ID	Object Name	Sub Object_1		Sub Object_2		Attribute ID	Attribute Name	Data Type	Required	Data Length	Format
		Object ID	Object Name	Object ID	Object Name						
ImportItemSearchReq	Search Import Item Request					tin	PIN	CHAR	Y	11	
						bhfid	Branch ID	CHAR	Y	2	
						cmcKey	Communication Key	CHAR	Y	255	
						lastReqDt	Last Request Date	CHAR	Y	14	
JSON SAMPLE											

Tulipe Ushuru, Tujitegemee!

ISO 9001:2015 CERTIFIED

Object						Attribute					
Object ID	Object Name	Sub Object_1		Sub Object_2		Attribute ID	Attribute Name	Data Type	Required	Data Length	Format
		Object ID	Object Name	Object ID	Object Name						
{“tin”:"A123456789Z",“bhfid”:"oo",“lastReqDt”:"20190524000000”}											

Object						Attribute					
Object ID	Object Name	Sub Object_1		Sub Object_2		Attribute ID	Attribute Name	Data Type	Required	Data Length	Format
		Object ID	Object Name	Object ID	Object Name						
ImportItemSearchResponses	Search Import Item Response					resultCd	Result Code	CHAR		3	
	Response					resultMsg	Result Message	CHAR			
						resultDt	Result Date	CHAR		14	
		ImportItem<List>	Item information			taskCd	Task Code	CHAR		50	
				dclDe	Declaration Date	CHAR		8			
				itemSeq	Item Sequence	NUMBER		10			
				dclNo	Declaration Number	CHAR		50			
				hsCd	HS Code	CHAR		17			
				itemNm	Item Name	CHAR		500			
				orgnNatCd	Import Item Status Code	CHAR		5	See '4.4. Nation'		
				exptNatCd	Origin Nation Code	CHAR		5			
				pkg	Export Nation Code	NUMBER		13,2			
				pkgUnitCd	Package	CHAR		5	See '4.5. Packaging Unit'		
						qty	Packaging Unit Code	NUMBER		13,2	

Tulipe Ushuru, Tujitegemee!

ISO 9001:2015 CERTIFIED

Object						Attribute					
Object ID	Object Name	Sub Object_1		Sub Object_2		Attribute ID	Attribute Name	Data Type	Required	Data Length	Format
		Object ID	Object Name	Object ID	Object Name						
						qtyUnitCd	Quantity	CHAR		5	See '4.6. Unit of Quantity'
						totWt	Quantity Unit Code	NUMBER		13,2	
						netWt	Gross Weight	NUMBER		13,2	
						spplrNm	Net Weight	CHAR		500	
						agntNm	Supplier's name	CHAR		500	
						invcFcurAmt	Agent name	NUMBER		18,2	See '4.1. Tax Type'
						invcFcurCd	Invoice Foreign Currency Amount	CHAR		5	See '4.7. Currency'
						invcFcurExert	Invoice Foreign Currency	NUMBER		18,2	

JSON SAMPLE

```
{
  "resultCd": "000",
  "resultMsg": "It is succeeded",
  "resultDt": "20200226194118",
  "data": {
    "itemList": [
      {
        "taskCd": "2239078",
        "dclDe": "-1",
        "itemSeq": 1,
        "dclNo": "C3460-2019-TZDL",
        "hsCd": "20055900000",
        "itemNm": "BAKED BEANS",
        "imptItemsttsCd": "2",
        "orgnNatCd": "BR",
        "exptNatCd": "BR",
        "pkg": "2922",
        "pkgUnitCd": null,
        "qty": "19946",
        "qtyUnitCd": "KGM",
        "totWt": "19945.57",
        "netWt": "19945.57",
        "spplrNm": "ODERICH CONSERVA QUALIDADE\nBRASIL",
        "agntNm": "BN METRO Ltd",
        "invcFcurAmt": "296865.6",
        "invcFcurCd": "USD",
        "invcFcurExert": "929.79"
      }
    ]
  }
}
```

Tulipe Ushuru, Tujitegemee!

3.3.5.2 ImportItemUpdateReq/Res

This part describes the components of Imported Item Save API function(url : /**updateImportItem**) and data types for each item. This API function is divided into 'Request: Argument' and 'Response: Return Object'. The **ImportItemUpdateReq** is an Argument Object of Request, The **ImportItemUpdateRes** is a Return Object of **Response**.

Object						Attribute					
Object ID	Object Name	Sub Object_1		Sub Object_2		Attribute ID	Attribute Name	Data Type	Required	Data Length	Format
		Object ID	Object Name	Object ID	Object Name						
ImportItemUpdateReq	Update Item Request					tin	PIN	CHAR	Y	11	
						bhfId	Branch ID	CHAR	Y	2	
						cmcKey	Communication Key	CHAR	Y	255	
						taskCd	Task Code	CHAR	Y	50	
						dclDe	Declaration Date	CHAR	Y	8	
						itemSeq	Item Sequence	NUMBER	Y	10	
						hsCd	HS Code	CHAR	Y	17	
						itemClCd	Item Classification Code	CHAR	Y	10	
						itemCd	Item Code	CHAR	Y	20	
						imptItemsttsCd	Import Item Status Code	CHAR	Y	5	See '4.15 Import Item status'
						remark	Remark	CHAR	N	400	
						modrId	Modifier ID	CHAR	Y	20	
				modrNm	Modifier Name	CHAR	Y	60			
JSON SAMPLE											
<pre>{ "tin": "A123456789Z", "bhfId": "00", "taskCd": "2231943", "dclDe": "20191217", "itemSeq": 1, "hsCd": "1231531231", "itemClsCd": "5022110801", "itemCd": "KE1NTXU0000001", "imptItemSttsCd": "1", "remark": "remark", "modrId": "Test", "modrNm": "Test" }</pre>											

Object						Attribute					
Object ID	Object Name	Sub Object_1		Sub Object_2		Attribute ID	Attribute Name	Data Type	Required	Data Length	Format
		Object ID	Object Name	Object ID	Object Name						
ImportItemUpdateRes	Update Item Response					resultCd	Result Code	CHAR		3	
						resultMsg	Result Message	CHAR			
						resultDt	Result Date	CHAR		14	
H JSON SAMPLE											
{"resultCd":"000","resultMsg":"It is succeeded","resultDt":"20200226194253","data":null}											

Tulipe Ushuru, Tujitegemee!

3.3.6 Sales Information

3.3.6.1 TrnsSalesSaveWrReq/Res

This part describes the components of Sales-transaction Save API function (url : /**saveTrnsSalesOsdc**) and data types for each item. This API function is divided into 'Request: Argument' and 'Response: Return Object'. The **TrnsSalesSaveWrReq** is an Argument Object of **Request**, The **TrnsSalesSaveWrRes** is a Return Object of **Response**.

Object						Attribute					
Object ID	Object Name	Sub Object_1		Sub Object_2		Attribute ID	Attribute Name	Data Type	Required	Data Length	Format
		Object ID	Object Name	Object ID	Object Name						
TrnsSalesSaveWrReq	Save Sales Request					tin	PIN	CHAR	Y	11	
						bhfid	Branch ID	CHAR	Y	2	
						cmcKey	Communication Key	CHAR	Y	255	
						trdInvcNo	Trader Invoice Number	CHAR	Y	50	
						invcNo	Invoice Number	NUMBER	Y	38	
						orgInvcNo	Original Invoice Number	NUMBER	Y	38	
						custTin	Customer PIN	CHAR	N	11	
						custNm	Customer Name	CHAR	N	60	
						reptTyCd	Receipt Type Code	CHAR	Y	5	See '4.9. Sale Receipt Type'
						pmtTyCd	Payment Type Code	CHAR	N	5	See '4.10. Payment Method'
						salesSttsCd	Invoice Status Code	CHAR	Y	5	See '4.11. Transaction Progress'
				cfmDt	Validated Date	CHAR	Y	14	yyyyMMddhhmmss		

Tulipe Ushuru, Tujitegemee!

ISO 9001:2015 CERTIFIED

Object						Attribute					
Object ID	Object Name	Sub Object_1		Sub Object_2		Attribute ID	Attribute Name	Data Type	Required	Data Length	Format
		Object ID	Object Name	Object ID	Object Name						
						salesDt	Sale Date	CHAR	Y	8	yyyyMMdd
						stockRlsDt	Stock Released Date	CHAR	N	14	yyyyMMddhhmmss
						cnclReqDt	Cancel Requeusted Date	CHAR	N	14	yyyyMMddhhmmss
						cnclDt	Canceled Date	CHAR	N	14	yyyyMMddhhmmss
						rfdDt	Credit Note Date	CHAR	N	14	yyyyMMddhhmmss
						rfdRsnCd	Credit Note Reason Code	CHAR	N	5	See'4.16.Credit Note Reason'
						totItemCnt	Total Item Count	NUMBER	Y	10	
						taxblAmtA	Taxable Amount A	NUMBER	Y	18,2	
						taxblAmtB	Taxable Amount B	NUMBER	Y	18,2	
						taxblAmtC	Taxable Amount C	NUMBER	Y	18,2	
						taxblAmtD	Taxable Amount D	NUMBER	Y	18,2	
						taxblAmtE	Taxable Amount E	NUMBER	Y	18,2	
						taxRtA	Tax Rate A	NUMBER	Y	7,2	
						taxRtB	Tax Rate B	NUMBER	Y	7,2	
						taxRtC	Tax Rate C	NUMBER	Y	7,2	
						taxRtD	Tax Rate D	NUMBER	Y	7,2	
						taxRtE	Tax Rate E	NUMBER	Y	7,2	

Tulipe Ushuru, Tujitegemee!

ISO 9001:2015 CERTIFIED

Object						Attribute					
Object ID	Object Name	Sub Object_1		Sub Object_2		Attribute ID	Attribute Name	Data Type	Required	Data Length	Format
		Object ID	Object Name	Object ID	Object Name						
						taxAmtA	Tax Amt A	NUMBER	Y	18,2	
						taxAmtB	Tax Amt B	NUMBER	Y	18,2	
						taxAmtC	Tax Amt C	NUMBER	Y	18,2	
						taxAmtD	Tax Amt D	NUMBER	Y	18,2	
						taxAmtE	Tax Amt E	NUMBER	Y	18,2	
						totTaxblAmt	Total Taxable Amount	NUMBER	Y	18,2	
						totTaxAmt	Total Tax Amount	NUMBER	Y	18,2	
						totAmt	Total Amount	NUMBER	Y	18,2	
						prchrAcptcYn	Purchase Accept Y/N	CHAR	Y	1	
						remark	Remark	CHAR	N	400	
						regrId	Registration ID	CHAR	Y	20	
						regrNm	Registration Name	CHAR	Y	60	
						modrId	Modifier ID	CHAR	Y	20	
						modrNm	Modifier Name	CHAR	Y	60	
						custTin	Customer PIN	CHAR	N	11	
						custMblNo	Customer Mobile Number	CHAR	N	20	
						reptPbctDt	Receipt Published Date	CHAR	Y	14	
		TrnsSalesSaveReceipt	Sales receipt information								

Tulipe Ushuru, Tujitegeme!



ISO 9001:2015 CERTIFIED

Object						Attribute							
Object ID	Object Name	Sub Object_1		Sub Object_2		Attribute ID	Attribute Name	Data Type	Required	Data Length	Format		
		Object ID	Object Name	Object ID	Object Name								
						trdeNm	Trand Name	CHAR	N	20			
						adrs	Address	CHAR	N	200			
						topMsg	Top Message	CHAR	N	20			
						btmMsg	Bottom Message	CHAR	N	20			
						prchrAcptcYn	Purchase Accept Y/N	CHAR	Y	1			
		TrnsSalesWareItem <List>	Deal sale registration item information			itemSeq	Item Sequence Number	NUMBER	Y	3			
								itemClsCd	Item Code	CHAR	N	10	
								itemCd	Item Classification Code	CHAR	Y	20	
								itemNm	Item Name	CHAR	Y	200	
								bcd	Barcode	CHAR	N	20	
								pkgUnitCd	Packaging Unit Code	CHAR	Y	5	See '4.5. Packaging Unit'
								pkg	Package	NUMBER	Y	13,2	
								qtyUnitCd	Quantity Unit Code	CHAR	Y	5	See '4.6. Unit of Quantity'
								qty	Quantity	NUMBER	Y	13,2	
								prc	Unit Price	NUMBER	Y	18,2	
								splyAmt	Supply Amount	NUMBER	Y	18,2	
								dcRt	Discount Rate	NUMBER	Y	5,2	
								dcAmt	Discount Amount	NUMBER	Y	18,2	

Tulipe Ushuru, Tujitegeme!

ISO 9001:2015 CERTIFIED

Object						Attribute					
Object ID	Object Name	Sub Object_1		Sub Object_2		Attribute ID	Attribute Name	Data Type	Required	Data Length	Format
		Object ID	Object Name	Object ID	Object Name						
						isrccCd	Insurance Company Code	CHAR	N	10	
						isrccNm	Insurance Company Name	CHAR	N	100	
						isrcRt	Insurance Rate	NUMBER	N	3	
						isrcAmt	Insurance Amount	NUMBER	N	18,2	
						taxTyCd	Taxation Type Code	CHAR	Y	5	See '4.1. Tax Type'
						taxblAmt	Taxable Amount	NUMBER	Y	18,2	
						totTaxAmt	Tax Amount	NUMBER	Y	18,2	
						totAmt	Total Amount	NUMBER	Y	18,2	

JSON SAMPLE

```
{
  "tin": "A123456789Z",
  "bhfid": "00",
  "trdInvcNo": 123,
  "invNo": 1,
  "orgInvcNo": 0,
  "custTin": "A123456789Z",
  "custNm": "Taxpayer1112",
  "salesTyCd": "N",
  "rcptTyCd": "S",
  "pmtTyCd": "01",
  "salesSttsCd": "02",
  "cfmDt": "20200127210300",
  "salesDt": "20200127",
  "stockRlsDt": "20200127210300",
  "cnclReqDt": null,
  "cnclDt": null,
  "rfdDt": null,
  "rfdRsnCd": null,
  "totItemCnt": 2,
  "taxblAmtA": 0,
  "taxblAmtB": 10500,
  "taxblAmtC": 0,
  "taxblAmtD": 0,
  "taxblAmtE": 0,
  "taxRtA": 0,
  "taxRtB": 18,
  "taxRtC": 0,
  "taxRtD": 0,
  "taxRtE": 0,
  "taxAmtA": 0,
  "taxAmtB": 1602,
  "taxAmtC": 0,
  "taxAmtD": 0,
  "taxAmtE": 0,
  "totTaxblAmt": 10500,
  "totTaxAmt": 1602,
  "totAmt": 10500,
  "prchrAcpteYn": "N",
  "remark": null,
  "regrId": "Test",
  "regrNm": "Test",
  "modrId": "Test",
  "modrNm": "Test",
  "receipt": {
    "custTin": "A123456789Z",
    "custMblNo": null,
    "rcptPbetDt": "20201118120300",
    "trdeNm": null,
    "adrs": null,
    "topMsg": null,
    "btmMsg": null,
    "prchrAcpteYn": "N"
  },
  "itemList": [
    {
      "itemSeq": 1,
      "itemCd": "KE1NTXU0000001",
      "itemClsCd": "5059690800",
      "itemNm": "test item 1",
      "bcd": null,
      "pkgUnitCd": "NT",
      "pkg": 2,
      "qtyUnitCd": "U",
      "qty": 2,
      "prc": 3500,
      "splyAmt": 7000,
      "dcRt": 0,
      "dcAmt": 0,
      "isrccCd": null,
      "isrccNm": null,
      "isrcRt": null,
      "isrcAmt": null,
      "taxTyCd": "B",
      "taxblAmt": 7000,
      "taxAmt": 1068,
      "totAmt": 7000
    },
    {
      "itemSeq": 2,
      "itemCd": "KE1NTXU0000002",
      "itemClsCd": "5022110801",
      "itemNm": "test item 2",
      "bcd": null,
      "pkgUnitCd": "NT",
      "pkg": 1,
      "qtyUnitCd": "U",
      "qty": 1,
      "prc": 3500,
      "splyAmt": 3500,
      "dcRt": 0,
      "dcAmt": 0,
      "isrccCd": null,
      "isrccNm": null,
      "isrcRt": null,
      "isrcAmt": null,
      "taxTyCd": "B",
      "taxblAmt": 3500,
      "taxAmt": 534,
      "totAmt": 3500
    }
  ]
}
```

Object	Attribute
--------	-----------

Tulipe Ushuru, Tujitegemee!

ISO 9001:2015 CERTIFIED

Object ID	Object Name	Sub Object_1		Sub Object_2		Attribute ID	Attribute Name	Data Type	Required	Data Length	Format		
		Object ID	Object Name	Object ID	Object Name								
TrnsSalesSaveWrRe	Save Sales Response					resultCd	Result Code	CHAR		3			
						resultMsg	Result Message	CHAR					
						resultDt	Result DateTime	CHAR		14	yyyyMMddhhmmss		
		TrnsSalesSaveWrRe sData	Response data					curRcptNo	Current Receipt Number	NUMBER		10	
								totRcptNo	Total Receipt Number	NUMBER		10	
						intrlData	Internal Data	CHAR		26			
						rcptSign	Receipt Signature	CHAR		16			
						sdcdatetime	Control Unit Date Time	CHAR		14	yyyyMMddhhmmss		
JSON SAMPLE													
{"resultCd":"000","resultMsg":"It is succeeded","resultDt":"20200226194328", "data":{"curRcptNo ":"1","totRcptNo ":"1","intrlData":"EAHSAV6ECUUXSY6PCCJYAUP6MI", "rcptSign":"QUII27MATATSHFRB", "sdcdatetime":"20210502115145"}}}													

Tulipe Ushuru, Tujitegemee!

3.3.7 Purchase Information

3.3.7.1 TrnsPurchaseSalesReq/Res

This part describes the components of Purchase-Sales Transaction API function (url : **/selectTrnsPurchaseSalesList**) and data types for each item. This API function is divided into 'Request: Argument' and 'Response: Return Object'. The **TrnsPurchaseSalesReq** is an Argument Object of Request, The **TrnsPurchaseSalesRes** is a Return Object of Response.

Object						Attribute					
Object ID	Object Name	Sub Object_1		Sub Object_2		Attribute ID	Attribute Name	Data Type	Required	Data Length	Format
		Object ID	Object Name	Object ID	Object Name						
TrnsPurchaseSalesReq	Search Purchase/Sales Request					tin	PIN	CHAR		11	
						bhfid	Branch ID	CHAR		2	
						cmcKey	Communication Key	CHAR	Y	255	
						lastReqDt	Last Request Date	CHAR		14	
JSON SAMPLE											
{“tin”:“A123456789Z”,“bhfid”:“00”,“lastReqDt”:“20190524000000”}											

Object						Attribute							
Object ID	Object Name	Sub Object_1		Sub Object_2		Attribute ID	Attribute Name	Data Type	Required	Data Length	Format		
		Object ID	Object Name	Object ID	Object Name								
TrnsPurchaseSalesRes	Search Purchase/Sales Response					resultCd	Result Code	CHAR		3			
						resultMsg	Result Message	CHAR					
						resultDt	Result Date	CHAR		14			
		TrnsPurchaseSales <List>	Transaction purchase sales					spplrTin	Supplier PIN	CHAR		11	
								spplrNm	Supplier Name	CHAR		60	

Tulipe Ushuru, Tujitegemee!

Object						Attribute					
Object ID	Object Name	Sub Object_1		Sub Object_2		Attribute ID	Attribute Name	Data Type	Required	Data Length	Format
		Object ID	Object Name	Object ID	Object Name						
			informati on			spplrBhfl d	Supplier Branch ID	CHAR		2	
						spplrInvc No	Supplier Invoice Number	NUMB ER		38	
						rcptTyCd	Receipt Type Code	CHAR		5	
						pmtTyCd	Payment Type Code	CHAR		5	
						cfmDt	Validated Date	CHAR		19	YYYY- MM-DD HH24:MI :SS
						salesDt	Sale Date	CHAR		8	YYYYMM DD
						stockRlsD t	Stock Released Date	CHAR		19	YYYY- MM-DD HH24:MI :SS
						totItemC nt	Total Item Count	NUMB ER		10	
						taxblAmt A	Taxable Amount A	NUMB ER		18,2	
						taxblAmt B	Taxable Amount B	NUMB ER		18,2	
						taxblAmt C	Taxable Amount C	NUMB ER		18,2	
						taxblAmt D	Taxable Amount D	NUMB ER		18,2	
						taxblAmt E	Taxable Amount E	NUMB ER		18,2	
						taxRtA	Tax Rate A	NUMB ER		7,2	
						taxRtB	Tax Rate B	NUMB		7,2	

Tulipe Ushuru, Tujitegeme!

Object						Attribute					
Object ID	Object Name	Sub Object_1		Sub Object_2		Attribute ID	Attribute Name	Data Type	Required	Data Length	Format
		Object ID	Object Name	Object ID	Object Name						
								ER			
						taxRtC	Tax Rate C	NUMBER		7,2	
						taxRtD	Tax Rate D	NUMBER		7,2	
						taxRtE	Tax Rate E	NUMBER		7,2	
						taxAmtA	Tax Amt A	NUMBER		18,2	
						taxAmtB	Tax Amt B	NUMBER		18,2	
						taxAmtC	Tax Amt C	NUMBER		18,2	
						taxAmtD	Tax Amt D	NUMBER		18,2	
						taxAmtE	Tax Amt E	NUMBER		18,2	
						totTaxblA mt	Total Taxable Amount	NUMBER		18,2	
						totTaxAm t	Total Tax Amount	NUMBER		18,2	
						totAmt	Total Amount	NUMBER		18,2	
						remark	Remark	CHAR		400	
					TrnsPurchaseSal esItem <List>	itemSeq	Item Sequence Number	NUMBER		3	
						itemClsC d	Item Classificatio n Code	CHAR		10	
						itemCd	Item Code	CHAR		20	

Tulipe Ushuru, Tujitegeme!

Object						Attribute					
Object ID	Object Name	Sub Object_1		Sub Object_2		Attribute ID	Attribute Name	Data Type	Required	Data Length	Format
		Object ID	Object Name	Object ID	Object Name						
						itemNm	Item Name	CHAR		200	
						bcd	Barcode	CHAR		20	
						pkgUnitCd	Packaging Unit Code	CHAR		5	See '4.5. Packaging Unit'
						pkg	Package	NUMBER		13,2	
						qtyUnitCd	Quantity Unit Code	CHAR		5	
						qty	Quantity	NUMBER		13,2	
						prc	Unit Price	NUMBER		18,2	
						splyAmt	Supply Amount	NUMBER		18,2	
						dcRt	Discount Rate	NUMBER		5,2	
						dcAmt	Discount Amount	NUMBER		18,2	
						taxTyCd	Taxation Type Code	NUMBER		5	
						taxblAmt	Taxable Amount	NUMBER		18,2	
						taxAmt	Tax Amount	NUMBER		18,2	
						totAmt	Total Amount	NUMBER		18,2	
JSON SAMPLE											
<pre> {"resultCd":"000","resultMsg":"It is succeeded","resultDt":"20200226195420","data":{"saleList":[{"spplrTin":"A123456789Z","spplrNm":"Taxpayer1111","spplrBhfid":"","spplrInvcNo":2,"reptTyCd":"S","pmtTyCd":"01","cfmDt":"2020-01-27 21:03:00","salesDt":"20200127","stockRlsDt":"2020-01-27 21:03:00","totItemCnt":2,"taxblAmtA":0,"taxblAmtB":10500,"taxblAmtC":0,"taxblAmtD":0,"taxblAmtE":0,"taxRtA":0,"taxRtB":18,"taxRtC":0,"taxRtD":0,"taxRtE":0,"taxAmtA":0,"taxAmtB":1602,"taxAmtC":0,"taxAmtD":0,"taxAmtE":0,"totTaxblAmt":10500,"totTaxAmt":1602,"totAmt":10500,"remark":null,"itemList":[{"itemSeq":1,"itemCd":"KE1NTXU00 </pre>											

Tulipe Ushuru, Tujitegeme!

Object						Attribute					
Object ID	Object Name	Sub Object_1		Sub Object_2		Attribute ID	Attribute Name	Data Type	Required	Data Length	Format
		Object ID	Object Name	Object ID	Object Name						
<pre>00001","itemClsCd":"5059690800","itemNm":"test item 1","bcd":null,"pkgUnitCd":"NT","pkg":2,"qtyUnitCd":"U","qty":2,"prc":3500,"splyAmt":7000,"dcRt":0,"dcAmt":0,"taxTyCd":"B","taxblAmt":7000,"taxAmt":1068,"totAmt":7000}, {"itemSeq":2,"itemCd":"KE1NTXU0000002","itemClsCd":"5022110801","itemNm":"test item 2","bcd":null,"pkgUnitCd":"NT","pkg":1,"qtyUnitCd":"U","qty":1,"prc":3500,"splyAmt":3500,"dcRt":0,"dcAmt":0,"taxTyCd":"B","taxblAmt":3500,"taxAmt":534,"totAmt":3500}}}] }}</pre>											

3.3.7.2 TrnsPurchaseSaveReq/Res

This part describes the components of Purchase-Transaction-Save API function (url : /**insertTrnsPurchase**) and data types for each item. This API function is divided into 'Request: Argument' and 'Response: Return Object'. The **TrnsPurchaseSaveReq** is an Argument Object of **Request**, The **TrnsPurchaseSaveRes** is a Return Object of **Response**.

Object						Attribute					
Object ID	Object Name	Sub Object_1		Sub Object_2		Attribute ID	Attribute Name	Data Type	Required	Data Length	Format
		Object ID	Object Name	Object ID	Object Name						
TrnsPurchaseSaveReq	Save Purchase Request					tin	PIN	CHAR	Y	11	
						bhfid	Branch ID	CHAR	Y	2	
						cmcKey	Communication Key	CHAR	Y	255	
						spplrTin	Supplier PIN	CHAR	N	11	
						invcNo	Invoice Number	NUMBER	Y	38	
						orgInvcNo	Original Invoice Number	NUMBER	Y	38	
						spplrBhfid	Supplier Branch ID	CHAR	N	2	
						spplrNm	Supplier Name	CHAR	N	60	
						spplrInvcNo	Supplier Invoice Number	NUMBER	N	38	
						regTyCd	Registration Type	CHAR	Y	5	See '4.12.

Tulipe Ushuru, Tujitegeme!

Object						Attribute					
Object ID	Object Name	Sub Object_1		Sub Object_2		Attribute ID	Attribute Name	Data Type	Required	Data Length	Format
		Object ID	Object Name	Object ID	Object Name						
							Code				Transaction Progress
						pchsTyCd	Purchase Type Code	CHAR	Y	5	See '4.8. Transaction Type'
						rcptTyCd	Receipt Type Code	CHAR	Y	5	See '4.13. Purchase Receipt Type'
						pmtTyCd	Payment Type Code	CHAR	Y	5	See '4.10. Payment Method'
						pchsSttsCd	Purchase Status Code	CHAR	Y	5	See '4.11. Transaction Progress'
						cfmDt	Validated Date	CHAR	N	14	yyyyMMddhhmmss
						pchsDt	Purchase Date	CHAR	Y	8	yyyyMMdd
						wrhsDt	Warehousing Date	CHAR	N	14	yyyyMMddhhmmss
						cnclReqDt	Cancel Requested Date	CHAR	N	14	yyyyMMddhhmmss
						cnclDt	Canceled Date	CHAR	N	14	yyyyMMddhhmmss
						rfdDt	Credit Note Date	CHAR	N	14	yyyyMMddhhmmss
						totItemCnt	Total Item Count	NUMBE	Y	10	

Tulipe Ushuru, Tujitegemee!

Object						Attribute					
Object ID	Object Name	Sub Object_1		Sub Object_2		Attribute ID	Attribute Name	Data Type	Required	Data Length	Format
		Object ID	Object Name	Object ID	Object Name						
								R			
						taxblAmtA	Taxable Amount A	NUMBER	Y	18,2	
						taxblAmtB	Taxable Amount B	NUMBER	Y	18,2	
						taxblAmtC	Taxable Amount C	NUMBER	Y	18,2	
						taxblAmtD	Taxable Amount D	NUMBER	Y	18,2	
						taxblAmtE	Taxable Amount E	NUMBER	Y	18,2	
						taxRtA	Tax Rate A	NUMBER	Y	7,2	
						taxRtB	Tax Rate B	NUMBER	Y	7,2	
						taxRtC	Tax Rate C	NUMBER	Y	7,2	
						taxRtD	Tax Rate D	NUMBER	Y	7,2	
						taxRtE	Tax Rate E	NUMBER	Y	7,2	
						taxAmtA	Tax Amt A	NUMBER	Y	18,2	
						taxAmtB	Tax Amt B	NUMBER	Y	18,2	
						taxAmtC	Tax Amt C	NUMBER	Y	18,2	
						taxAmtD	Tax Amt D	NUMBER	Y	18,2	
						taxAmtE	Tax Amt E	NUMBER	Y	18,2	
						totTaxblAmt	Total Taxable Amount	NUMBER	Y	18,2	

Tulipe Ushuru, Tujitegeme!

Object						Attribute							
Object ID	Object Name	Sub Object_1		Sub Object_2		Attribute ID	Attribute Name	Data Type	Required	Data Length	Format		
		Object ID	Object Name	Object ID	Object Name								
						totTaxAmt	Total Tax Amount	NUMBER	Y	18,2			
						totAmt	Total Amount	NUMBER	Y	18,2			
						remark	Remark	CHAR	N	400			
						regrId	Registration ID	CHAR	Y	20			
						regrNm	Registration Name	CHAR	Y	60			
						modrId	Modifier ID	CHAR	Y	20			
						modrNm	Modifier Name	CHAR	Y	60			
		TrnsPurchaseSaveItem <List>	Save transaction purchase item information			itemSeq	Item Sequence Number	NUMBER	Y	3			
								itemCd	Item Code	CHAR	N	20	
								itemClsCd	Item Classification Code	CHAR	Y	10	
								itemNm	Item Name	CHAR	Y	200	
								bcd	Barcode	CHAR	N	20	
								spplrItemClsCd	Supplier Item Classification Code	CHAR	N	10	
								spplrItemCd	Supplier Item Code	CHAR	N	20	
								spplrItemNm	Supplier Item Name	CHAR	N	200	
								pkgUnitCd	Packaging Unit Code	CHAR	N	5	See '4.5. Packaging Unit'
								pkg	Package	NUMBER	Y	13,2	

Tulipe Ushuru, Tujitegeme!

ISO 9001:2015 CERTIFIED

Object						Attribute					
Object ID	Object Name	Sub Object_1		Sub Object_2		Attribute ID	Attribute Name	Data Type	Required	Data Length	Format
		Object ID	Object Name	Object ID	Object Name						
						qtyUnitCd	Quantity Unit Code	CHAR	Y	5	See '4.6. Unit of Quantity'
						qty	Quantity	NUMBE R	Y	13,2	
						prc	Unit Price	NUMBE R	Y	18,2	
						splyAmt	Supply Price	NUMBE R	Y	18,2	
						dcRt	Discount Rate	NUMBE R	Y	5,2	
						dcAmt	Discaount Amount	NUMBE R	Y	18,2	
						taxblAmt	Taxable Amout	NUMBE R	Y	18,2	
						taxTyCd	Taxation Type Code	NUMBE R	Y	5	See '4.1. Tax Type'
						taxAmt	Tax Amount	NUMBE R	Y	18,2	
						totAmt	Total Amount	NUMBE R	Y	18,2	
						itemExprDt	Item Expired Date	CHAR	N	8	yyyyMMd d

JSON SAMPLE

```
{
  "tin": "A123456789Z",
  "bhfl": "00",
  "invcNo": 1,
  "orgInvcNo": 0,
  "spplrTin": "A123456789Z",
  "spplrBhfl": null,
  "spplrNm": null,
  "spplrInvcNo": null,
  "regTyCd": "M",
  "pchsTyCd": "N",
  "rcptTyCd": "P",
  "pmtTyCd": "01",
  "pchsSttsCd": "02",
  "cfmDt": "20200127210300",
  "pchsDt": "20200127",
  "wrhsDt": "",
  "cnclReqDt": "",
  "cnclDt": "",
  "rfdDt": "",
  "totItemCnt": 2,
  "taxblAmtA": 0,
  "taxblAmtB": 10500,
  "taxblAmtC": 0,
  "taxblAmtD": 0,
  "taxblAmtE": 0,
  "taxRtA": 0,
  "taxRtB": 18,
  "taxRtC": 0,
  "taxRtD": 0,
  "taxRtE": 0,
  "taxAmtA": 0,
  "taxAmtB": 1890,
  "taxAmtC": 0,
  "taxAmtD": 0,
  "taxAmtE": 0,
  "totTaxblAmt": 10500,
  "totTaxAmt": 1890,
  "totAmt": 10500,
  "remark": null,
  "regrId": "Test",
  "regrNm": "Test",
  "modrId": "Test",
  "modrNm": "Test",
  "itemList": [
    {
      "itemSeq": 1,
      "itemCd": "KE1NTXU0000001",
      "itemClsCd": "5059690800",
      "itemNm": "test item 1",
      "bcd": "",
      "spplrItemClsCd": null,
      "spplrItemCd": null,
      "spplrItemNm": null,
      "pkgUnitCd": "NT",
      "pkg": 2,
      "qtyUnitCd": "U",
      "qty": 2,
      "prc": 3500,
      "splyAmt": 7000,
      "dcRt": 0,
      "dcAmt": 0,
      "taxblAmt": 7000,
      "taxTyCd": "B",
      "taxAmt": 1260,
      "totAmt": 7000,
      "itemExprDt": null
    },
    {
      "itemSeq": 2,
      "itemCd": "KE1NTXU0000002",
      "itemClsCd": "5022110801",
      "itemNm": "test item 2",
      "bcd": "",
      "spplrItemClsCd": null,
      "spplrItemCd": null,
      "spplrItemNm": null,
      "pkgUnitCd": "NT",
      "pkg": 1,
      "qtyUnitCd": "U",
      "qty": 1,
      "prc": 3500,
      "splyAmt": 3500,
      "dcRt": 0,
      "dcAmt": 0,
      "tax"
    }
  ]
}
```

Tulipe Ushuru, Tujitegeme!

ISO 9001:2015 CERTIFIED

Object						Attribute					
Object ID	Object Name	Sub Object_1		Sub Object_2		Attribute ID	Attribute Name	Data Type	Required	Data Length	Format
		Object ID	Object Name	Object ID	Object Name						
blAmt":3500,"taxTyCd":"B","taxAmt":630,"totAmt":3500,"itemExprDt":null}}}											

Object						Attribute					
Object ID	Object Name	Sub Object_1		Sub Object_2		Attribute ID	Attribute Name	Data Type	Required	Data Length	Format
		Object ID	Object Name	Object ID	Object Name						
TrnsPurchaseSaveRes	Save Purchase Response					resultCd	Result Code	CHAR		3	
						resultMsg	Result Message	CHAR			
						resultDt	Result DateTime	CHAR		14	
JSON SAMPLE											
{"resultCd":"000","resultMsg":"It is succeeded","resultDt":"20200226194650","data":null}											

3.3.8 Stock Information

3.3.8.1 StockMoveReq/Res

This part describes the components of Stock-movement API function (url : /**selectStockMoveList**) and data types for each item. This API function is divided into 'Request: Argument' and 'Response: Return Object'. The **StockMoveReq** is an Argument Object of **Request**, The **StockMoveRes** is a Return Object of **Response**.

Object						Attribute					
Object ID	Object Name	Sub Object_1		Sub Object_2		Attribute ID	Attribute Name	Data Type	Required	Data Length	Format
		Object ID	Object Name	Object ID	Object Name						
StockMoveReq	Search Stock Movement Request					tin	PIN	CHAR	Y	11	
						bhfId	Branch ID	CHAR	Y	2	
						cmcKey	Communication Key	CHAR	Y	255	
						lastReqDt	Last Request date time	CHAR	Y	14	
JSON SAMPLE											
{"tin": "A123456789Z", "bhfId": "00", "lastReqDt": "20180524000000"}											

Object						Attribute							
Object ID	Object Name	Sub Object_1		Sub Object_2		Attribute ID	Attribute Name	Data Type	Required	Data Length	Format		
		Object ID	Object Name	Object ID	Object Name								
StockMoveRes	Search Stock Movement Response					resultCd	Result Code	CHAR		3			
						resultMsg	Result Message	CHAR					
						resultDt	Result Date	CHAR		14			
		StockMove <List>	Stock movement information					custTin	Customer PIN	CHAR		11	
								custBhfId	Customer Branch Office ID	CHAR		2	
								sarNo	Stored and released	NUMBER		38	

Tulipe Ushuru, Tujitegeme!

ISO 9001:2015 CERTIFIED

Object				Attribute					
Object ID	Object Name	Sub Object_1	Sub Object_2	Attribute ID	Attribute Name	Data Type	Required	Data Length	Format
				ocrnDt	Occurred Date	CHAR		8	yyyyMMdd
				totItemCnt	Total Item Count	NUMBER		10	
				totTaxblAmt	Total Supply Price	NUMBER		18,2	
				totTaxAmt	Total VAT	NUMBER		18,2	
				totAmt	Total Amount	NUMBER		18,2	
				remark	Remark	CHAR		400	
			StockMove Item <List>	itemSeq	Item Sequence	NUMBER		3	
				itemClsCd	Item Class Code	CHAR		10	
				itemCd	Item Code	CHAR		20	
				itemNm	Item Name	CHAR		200	
				bcd	Barcode	CHAR		20	
				pkgUnitCd	Package unit code	CHAR		5	
				pkg	Package Quantity	NUMBER		13,2	
				qtyUnitCd	Unit Quantity Code	CHAR		5	
				qty	Unit Quantity	NUMBER		13,2	
				itemExprDt	Item Expired Date	CHAR		8	yyyyMMdd
				prc	Unit Price	NUMBER		15,2	
				splyAmt	Supply Amount	NUMBER		18,2	
				totDcAmt	Discount Rate	NUMBER		18,2	

Tulipe Ushuru, Tujitegemee!

ISO 9001:2015 CERTIFIED

Object						Attribute					
Object ID	Object Name	Sub Object_1		Sub Object_2		Attribute ID	Attribute Name	Data Type	Required	Data Length	Format
								taxblAmt	Taxable Amount	NUMBER	
						taxTyCd	Taxation Type Code	CHAR		5	See '4.1. Tax Type'
						taxAmt	Tax Amount	NUMBER		18,2	
						totAmt	Total Amount	NUMBER		18,2	0

JSON SAMPLE

```
{
  "resultCd": "000",
  "resultMsg": "It succeeded",
  "resultDt": "20200226200723",
  "data": {
    "stockList": [
      {
        "custTin": "A123456789Z",
        "custBhId": "00",
        "sarNo": 6,
        "ocrnDt": "20200120",
        "totItemCnt": 1,
        "totTaxblAmt": 1800000,
        "totTaxAmt": 274576.27,
        "totAmt": 1800000,
        "remark": null,
        "itemList": [
          {
            "itemSeq": 1,
            "itemCd": "KR2BZX0000001",
            "itemClsCd": "1110162100",
            "itemNm": "Grocery_Item#1",
            "bcd": "8801234567051",
            "pkgUnitCd": "BZ",
            "pkg": 0,
            "qtyUnitCd": "CA",
            "qty": 450,
            "itemExprDt": null,
            "prc": 4000,
            "splyAmt": 1800000,
            "totDcAmt": 0,
            "taxblAmt": 1800000,
            "taxTyCd": "B",
            "taxAmt": 274576.27,
            "totAmt": 1800000
          }
        ]
      },
      {
        "custTin": "A123456789Z",
        "custBhId": "00",
        "sarNo": 59,
        "ocrnDt": "20200110",
        "totItemCnt": 1,
        "totTaxblAmt": 660000,
        "totTaxAmt": 100677.97,
        "totAmt": 660000,
        "remark": null,
        "itemList": [
          {
            "itemSeq": 1,
            "itemCd": "KR2AMXCRX0000001",
            "itemClsCd": "1110151600",
            "itemNm": "sample_nudle#1",
            "bcd": "8801234567001",
            "pkgUnitCd": "AM",
            "pkg": 0,
            "qtyUnitCd": "CR",
            "qty": 600,
            "itemExprDt": null,
            "prc": 1100,
            "splyAmt": 660000,
            "totDcAmt": 0,
            "taxblAmt": 660000,
            "taxTyCd": "B",
            "taxAmt": 100677.97,
            "totAmt": 660000
          }
        ]
      }
    ]
  }
}
```

3.3.8.2 StockIOSaveReq/Res

This part describes the components of Stock-In/Out-Save API function (url : /insertStockIO) and data types for each item. This API function is divided into 'Request: Argument' and 'Response: Return Object'. The **StockIOSaveReq** is an Argument Object of **Request**, The **StockIOSaveRes** is a Return Object of **Response**.

Object						Attribute					
Object ID	Object Name	Sub Object_1		Sub Object_2		Attribute ID	Attribute Name	Data Type	Required	Data Length	Format
		Object ID	Object Name	Object ID	Object Name						
StockIOSaveReq	Save Stock In/Out Request					tin	PIN	CHAR	Y	11	
						bhId	Branch ID	CHAR	Y	2	
						cmcKey	Communication Key	CHAR	Y	255	255
						sarNo	Stored and	NUMBER	Y	38	

Tulipe Ushuru, Tujitegemee!

ISO 9001:2015 CERTIFIED

Object				Attribute					
Object ID	Object Name	Sub Object_1	Sub Object_2	Attribute ID	Attribute Name	Data Type	Required	Data Length	Format
					released Number	R			
				orgSarNo	Original Stored and released Number	NUMBER	Y	38	
				regTyCd	Registration Type Code	CHAR	Y	5	
				custTin	Customer PIN	CHAR	N	11	
				custNm	Customer Name	CHAR	N	100	
				custBhfId	Customer BHF ID	CHAR	N	2	
				sarTyCd	Stored and released Type Code	CHAR	Y	5	See '4.14 Stock In/Out'
				ocrnDt	Occurred Date time	CHAR	Y	8	yyyyMMdd
				totItemCnt	Total Item Count	NUMBER	Y	10	
				totTaxblAmt	Total Supply Price	NUMBER	Y	18,2	
				totTaxAmt	Total VAT	NUMBER	Y	18,2	
				totAmt	Total Amount	NUMBER	Y	18,2	
				remark	Remark	CHAR	N	400	
				regrId	Registration ID	CHAR	Y	20	
				regrNm	Registration Name	CHAR	Y	60	
				modrId	Modifier ID	CHAR	Y	20	
				modrNm	Modifier Name	CHAR	Y	60	
				itemSeq	Item Sequence	NUMBER	Y	3	
				itemCd	Item Code	CHAR	N	20	
				itemClsCd	Item Class Code	CHAR	Y	10	
				itemNm	Item Name	CHAR	Y	200	
		StockItemSaveReq <List>	Stock in/out item information						

Tulipe Ushuru, Tujitegeme!

ISO 9001:2015 CERTIFIED

Object				Attribute					
Object ID	Object Name	Sub Object_1	Sub Object_2	Attribute ID	Attribute Name	Data Type	Required	Data Length	Format
				bcd	Barcode	CHAR	N	20	
				pkgUnitCd	Package unit code	CHAR	Y	5	
				pkg	Package Quantity	NUMBER	Y	13,2	
				qtyUnitCd	Unit Quantity Code	CHAR	Y	5	See '4.5. Packaging Unit'
				qty	Unit Quantity	NUMBER	Y	13,2	
				itemExprDt	Item Expired Date	CHAR	N	8	yyyyMMdd
				prc	Unit Price	NUMBER	Y	15,2	
				splyAmt	Supply Amount	NUMBER	Y	18,2	
				totDcAmt	Discount Amount	NUMBER	Y	18,2	
				taxblAmt	Taxable Amount	NUMBER	Y	18,2	
				taxTyCd	Taxation Type Code	CHAR	Y	5	See '4.1 Tax Type'
				taxAmt	Tax Amount	NUMBER	Y	18,2	
				totAmt	Total Amount	NUMBER	Y	18,2	

JSON SAMPLE

```
{
  "tin": "A123456789Z",
  "bhflId": "00",
  "sarNo": 2,
  "orgSarNo": 2,
  "regTyCd": "M",
  "custTin": "A123456789Z",
  "custNm": null,
  "custBhflId": null,
  "sarTyCd": "11",
  "ocrnDt": "20200126",
  "totItemCnt": 2,
  "totTaxblAmt": 70000,
  "totTaxAmt": 10677.96,
  "totAmt": 70000,
  "remark": null,
  "regId": "Test",
  "regNm": "Test",
  "modrId": "Test",
  "modrNm": "Test",
  "itemList": [
    {
      "itemSeq": 1,
      "itemCd": "KE1NTXU0000001",
      "itemClsCd": "5059690800",
      "itemNm": "test item 1",
      "bcd": null,
      "pkgUnitCd": "NT",
      "pkg": 10,
      "qtyUnitCd": "U",
      "qty": 10,
      "itemExprDt": null,
      "prc": 3500,
      "splyAmt": 35000,
      "totDcAmt": 0,
      "taxblAmt": 35000,
      "taxTyCd": "B",
      "taxAmt": 5338.98,
      "totAmt": 35000
    },
    {
      "itemSeq": 2,
      "itemCd": "KE1NTXU0000002",
      "itemClsCd": "5059690800",
      "itemNm": "test item 2",
      "bcd": null,
      "pkgUnitCd": "BL",
      "pkg": 10,
      "qtyUnitCd": "U",
      "qty": 10,
      "itemExprDt": null,
      "prc": 3500,
      "splyAmt": 35000,
      "totDcAmt": 0,
      "taxblAmt": 35000,
      "taxTyCd": "B",
      "taxAmt": 5338.98,
      "totAmt": 35000
    }
  ]
}
```

Tulipe Ushuru, Tujitegemee!

Object						Attribute					
Object ID	Object Name	Sub Object_1		Sub Object_2		Attribute ID	Attribute Name	Data Type	Required	Data Length	Format
		Object ID	Object Name	Object ID	Object Name						
StockIOSaveRes	Save Stock In/Out Response					resultCd	Result Code	CHAR		3	
						resultMsg	Result Message	CHAR			
						resultDt	Result Date	CHAR		14	
JSON SAMPLE											
{"resultCd":"000","resultMsg":"It is succeeded","resultDt":"20200226195801","data":null}											

3.3.8.3 StockMasterSaveReq/Res

This part describes the components of Save-StockMaster API function (url : **/saveStockMaster**) and data types for each item. This API function is divided into 'Request: Argument' and 'Response: Return Object'. The **StockMasterSaveReq** is an Argument Object of Request, The **StockMasterSaveRes** is a Return Object of Response.

Object						Attribute					
Object ID	Object Name	Sub Object_1		Sub Object_2		Attribute ID	Attribute Name	Data Type	Required	Data Length	Format
		Object ID	Object Name	Object ID	Object Name						
StockMasterSaveReq	Save Stock Master Request					tin	PIN	CHAR	Y	11	
						bhfId	Branch ID	CHAR	Y	2	
						cmcKey	Communication Key	CHAR	Y	255	
						itemCd	Item Code	CHAR	Y	20	
						rsdQty	Remain Quantity	NUMBER	Y	13,2	
						regrId	Registration ID	CHAR	Y	20	
						regrNm	Registration Name	CHAR	Y	60	
						modrId	Modifier ID	CHAR	Y	20	
						modrNm	Modifier Name	CHAR	Y	60	
JSON SAMPLE											

Tulipe Ushuru, Tujitegemee!

```
{“tin”:”A123456789Z”,”bhfid”:”oo”,”itemCd”:”KE1NTXU0000002”,”rsdQty”:10,”regrId”:”Test”,”regrNm”:”Test”,”modrId”:”Test”,”modrNm”:”Test”}
```

Object						Attribute					
Object ID	Object Name	Sub Object_1		Sub Object_2		Attribute ID	Attribute Name	Data Type	Required	Data Length	Format
		Object ID	Object Name	Object ID	Object Name						
StockMasterSaveRes	Save Stock Master Response					resultCd	Result Code	CHAR		3	
						resultMsg	Result Message	CHAR			
						resultDt	Result Date	CHAR		14	

JSON SAMPLE

```
{"resultCd":”ooo”,”resultMsg”:”It is succeeded”,”resultDt”:”20200226195637”,”data”:null}
```



4 Code Definition

4.1. Tax Type

Code Classification			Code Classification Name	
04			Tax Type	
Code	Sort Order	Code Name	Code Description	remark
A	1	A	A-Exempt	
B	2	B-16.00%	B-16.00%	
C	3	C	C-0%	
D	4	D	D- Non-VAT	
E	5	E	E-8%	

4.2. Taxpayer Status

Code Classification			Code Classification Name	
15			Taxpayer Status	
Code	Sort Order	Code Name	Code Description	remark
A	1	Active	Active	
D	2	Inactive	Inactive	

4.3. Product Type

Code Classification			Code Classification Name	
24			Product Type	
Code	Sort Order	Code Name	Code Description	remark
1	1	Raw Material	Raw Material	
2	2	Finished Product	Finished Product	
3	3	Service	Service without stock	

4.4. Countries Code

Code Classification			Code Classification Name	
05			Nation	
Code	Sort Order	Code Name	Code Description	remark
AC	1	ASCENSION ISLAND	ASCENSION ISLAND	
AD	2	ANDORRA	ANDORRA	
AE	3	UNITED ARAB EMIRATES	UNITED ARAB EMIRATES	
AG	4	ANTIGUA AND	ANTIGUA AND BARBUDA	



Code Classification			Code Classification Name	
Code	Sort Order	Code Name	Code Description	remark
05			Nation	
		BARBUDA		
AI	5	ANGUILLA	ANGUILLA	
AL	6	ALBANIA	ALBANIA	
AM	7	ARMENIA	ARMENIA	
AN	8	NETHERLANDS ANTILLES	NETHERLANDS ANTILLES	
AO	9	ANGOLA	ANGOLA	
AQ	10	ANTARCTICA	ANTARCTICA	
AR	11	ARGENTINA	ARGENTINA	
AS	12	AMERICAN SAMOA	AMERICAN SAMOA	
AT	13	AUSTRIA	AUSTRIA	
AU	14	AUSTRALIA	AUSTRALIA	
AW	15	ARUBA	ARUBA	
AX	16	ALAND ISLANDS	ALAND ISLANDS	
AZ	17	AZERBAIJAN	AZERBAIJAN	
BA	18	BOSNIA AND HERZEGOVINA	BOSNIA AND HERZEGOVINA	
BB	19	BARBADOS	BARBADOS	
BD	20	BANGLADESH	BANGLADESH	
BE	21	BELGIUM	BELGIUM	
BF	22	BURKINA FASO	BURKINA FASO	
BG	23	BULGARIA	BULGARIA	
BH	24	BAHRAIN	BAHRAIN	
BI	25	BURUNDI	BURUNDI	
BJ	26	BENIN	BENIN	
BM	27	BERMUDA	BERMUDA	
BN	28	BRUNEI DARUSSALAM	BRUNEI DARUSSALAM	
BO	29	BOLIVIA	BOLIVIA	
BR	30	BRAZIL	BRAZIL	
BS	31	BAHAMAS	BAHAMAS	
BT	32	BHUTAN	BHUTAN	
BV	33	BOUVET ISLAND	BOUVET ISLAND	
BW	34	BOTSWANA	BOTSWANA	
BY	35	BELARUS	BELARUS	
BZ	36	BELIZE	BELIZE	
CA	37	CANADA	CANADA	
CC	38	COCOS (KEELING) ISLANDS	COCOS (KEELING) ISLANDS	
CD	39	CONGO, DEMOCRATIC REPUBLIC	CONGO, DEMOCRATIC REPUBLIC	
CF	40	CENTRAL	CENTRAL AFRICAN REPUBLIC	



Code Classification			Code Classification Name	
05			Nation	
Code	Sort Order	Code Name	Code Description	remark
		AFRICAN REPUBLIC		
CG	41	CONGO	CONGO	
CH	42	SWITZERLAND	SWITZERLAND	
CI	43	COTE D'IVOIRE (IVORY COAST)	COTE D'IVOIRE (IVORY COAST)	
CK	44	COOK ISLANDS	COOK ISLANDS	
CL	45	CHILE	CHILE	
CM	46	CAMEROON	CAMEROON	
CN	47	CHINA	CHINA	
CO	48	COLOMBIA	COLOMBIA	
CR	49	COSTA RICA	COSTA RICA	
CS	50	CZECHOSLOVAKIA (FORMER)	CZECHOSLOVAKIA (FORMER)	
CU	51	CUBA	CUBA	
CV	52	CAPE VERDE	CAPE VERDE	
CX	53	CHRISTMAS ISLAND	CHRISTMAS ISLAND	
CY	54	CYPRUS	CYPRUS	
CZ	55	CZECH REPUBLIC	CZECH REPUBLIC	
DE	56	GERMANY	GERMANY	
DJ	57	DJIBOUTI	DJIBOUTI	
DK	58	DENMARK	DENMARK	
DM	59	DOMINICA	DOMINICA	
DO	60	DOMINICAN REPUBLIC	DOMINICAN REPUBLIC	
DZ	61	ALGERIA	ALGERIA	
EC	62	ECUADOR	ECUADOR	
EE	63	ESTONIA	ESTONIA	
EG	64	EGYPT	EGYPT	
EH	65	WESTERN SAHARA	WESTERN SAHARA	
ER	66	ERITREA	ERITREA	
ES	67	SPAIN	SPAIN	
ET	68	ETHIOPIA	ETHIOPIA	
EU	69	EUROPEAN UNION	EUROPEAN UNION	
FI	70	FINLAND	FINLAND	
FJ	71	FIJI	FIJI	
FK	72	FALKLAND ISLANDS (MALVINAS)	FALKLAND ISLANDS (MALVINAS)	
FM	73	MICRONESIA	MICRONESIA	
FO	74	FAROE ISLANDS	FAROE ISLANDS	
FR	75	FRANCE	FRANCE	



Code Classification			Code Classification Name	
05			Nation	
Code	Sort Order	Code Name	Code Description	remark
FX	76	FRANCE, METROPOLITAN	FRANCE, METROPOLITAN	
GA	77	GABON	GABON	
GB	78	GREAT BRITAIN (UK)	GREAT BRITAIN (UK)	
GD	79	GRENADA	GRENADA	
GE	80	GEORGIA	GEORGIA	
GF	81	FRENCH GUIANA	FRENCH GUIANA	
GG	82	GUERNSEY	GUERNSEY	
GH	83	GHANA	GHANA	
GI	84	GIBRALTAR	GIBRALTAR	
GL	85	GREENLAND	GREENLAND	
GM	86	GAMBIA	GAMBIA	
GN	87	GUINEA	GUINEA	
GP	88	GUADELOUPE	GUADELOUPE	
GQ	89	EQUATORIAL GUINEA	EQUATORIAL GUINEA	
GR	90	GREECE	GREECE	
GS	91	S. GEORGIA AND S. SANDWICH ISLS.	S. GEORGIA AND S. SANDWICH ISLS.	
GT	92	GUATEMALA	GUATEMALA	
GU	93	GUAM	GUAM	
GW	94	GUINEA BISSAU	GUINEA BISSAU	
GY	95	GUYANA	GUYANA	
HK	96	HONG KONG	HONG KONG	
HM	97	HEARD AND MCDONALD ISLANDS	HEARD AND MCDONALD ISLANDS	
HN	98	HONDURAS	HONDURAS	
HR	99	CROATIA (HRVATSKA)	CROATIA (HRVATSKA)	
HT	100	HAITI	HAITI	
HU	101	HUNGARY	HUNGARY	
ID	102	INDONESIA	INDONESIA	
IE	103	IRELAND	IRELAND	
IL	104	ISRAEL	ISRAEL	
IM	105	ISLE OF MAN	ISLE OF MAN	
IN	106	INDIA	INDIA	
IO	107	BRITISH INDIAN OCEAN TERRITORY	BRITISH INDIAN OCEAN TERRITORY	
IQ	108	IRAQ	IRAQ	
IR	109	IRAN	IRAN	
IS	110	ICELAND	ICELAND	



Code Classification			Code Classification Name	
05			Nation	
Code	Sort Order	Code Name	Code Description	remark
IT	111	ITALY	ITALY	
JE	112	JERSEY	JERSEY	
JM	113	JAMAICA	JAMAICA	
JO	114	JORDAN	JORDAN	
JP	115	JAPAN	JAPAN	
KE	116	KENYA	KENYA	
KG	117	KYRGYZSTAN	KYRGYZSTAN	
KH	118	CAMBODIA	CAMBODIA	
KI	119	KIRIBATI	KIRIBATI	
KM	120	COMOROS	COMOROS	
KN	121	SAINT KITTS AND NEVIS	SAINT KITTS AND NEVIS	
KP	122	NORTH KOREA	NORTH KOREA	
KR	123	SOUTH KOREA	SOUTH KOREA	
KW	124	KUWAIT	KUWAIT	
KY	125	CAYMAN ISLANDS	CAYMAN ISLANDS	
KZ	126	KAZAKHSTAN	KAZAKHSTAN	
LA	127	LAOS	LAOS	
LB	128	LEBANON	LEBANON	
LC	129	SAINT LUCIA	SAINT LUCIA	
LI	130	LIECHTENSTEIN	LIECHTENSTEIN	
LK	131	SRI LANKA	SRI LANKA	
LR	132	LIBERIA	LIBERIA	
LS	133	LESOTHO	LESOTHO	
LT	134	LITHUANIA	LITHUANIA	
LU	135	LUXEMBOURG	LUXEMBOURG	
LV	136	LATVIA	LATVIA	
LY	137	LIBYA	LIBYA	
MA	138	MOROCCO	MOROCCO	
MC	139	MONACO	MONACO	
MD	140	MOLDOVA	MOLDOVA	
ME	141	MONTENEGRO	MONTENEGRO	
MG	142	MADAGASCAR	MADAGASCAR	
MH	143	MARSHALL ISLANDS	MARSHALL ISLANDS	
MK	144	F.Y.R.O.M. (MACEDONIA)	F.Y.R.O.M. (MACEDONIA)	
ML	145	MALI	MALI	
MM	146	MYANMAR	MYANMAR	
MN	147	MONGOLIA	MONGOLIA	
MO	148	MACAU	MACAU	
MP	149	NORTHERN MARIANA ISLANDS	NORTHERN MARIANA ISLANDS	



Code Classification			Code Classification Name	
Code	Sort Order	Code Name	Code Description	remark
05			Nation	
MQ	150	MARTINIQUE	MARTINIQUE	
MR	151	MAURITANIA	MAURITANIA	
MS	152	MONTSERRAT	MONTSERRAT	
MT	153	MALTA	MALTA	
MU	154	MAURITIUS	MAURITIUS	
MV	155	MALDIVES	MALDIVES	
MW	156	MALAWI	MALAWI	
MX	157	MEXICO	MEXICO	
MY	158	MALAYSIA	MALAYSIA	
MZ	159	MOZAMBIQUE	MOZAMBIQUE	
NA	160	NAMIBIA	NAMIBIA	
NC	161	NEW CALEDONIA	NEW CALEDONIA	
NE	162	NIGER	NIGER	
NF	163	NORFOLK ISLAND	NORFOLK ISLAND	
NG	164	NIGERIA	NIGERIA	
NI	165	NICARAGUA	NICARAGUA	
NL	166	NETHERLANDS	NETHERLANDS	
NO	167	NORWAY	NORWAY	
NP	168	NEPAL	NEPAL	
NR	169	NAURU	NAURU	
NT	170	NEUTRAL ZONE	NEUTRAL ZONE	
NU	171	NIUE	NIUE	
NZ	172	NEW ZEALAND (AOTEAROA)	NEW ZEALAND (AOTEAROA)	
OM	173	OMAN	OMAN	
PA	174	PANAMA	PANAMA	
PE	175	PERU	PERU	
PF	176	FRENCH POLYNESIA	FRENCH POLYNESIA	
PG	177	PAPUA NEW GUINEA	PAPUA NEW GUINEA	
PH	178	PHILIPPINES	PHILIPPINES	
PK	179	PAKISTAN	PAKISTAN	
PL	180	POLAND	POLAND	
PM	181	ST. PIERRE AND MIQUELON	ST. PIERRE AND MIQUELON	
PN	182	PITCAIRN	PITCAIRN	
PR	183	PUERTO RICO	PUERTO RICO	
PS	184	PALESTINIAN TERRITORY, OCCUPIED	PALESTINIAN TERRITORY, OCCUPIED	
PT	185	PORTUGAL	PORTUGAL	
PW	186	PALAU	PALAU	
PY	187	PARAGUAY	PARAGUAY	



Code Classification			Code Classification Name	
Code	Sort Order	Code Name	Code Description	remark
05			Nation	
QA	188	QATAR	QATAR	
RE	189	REUNION	REUNION	
RO	190	ROMANIA	ROMANIA	
RS	191	SERBIA	SERBIA	
RU	192	RUSSIAN FEDERATION	RUSSIAN FEDERATION	
RW	193	RWANDA	RWANDA	
SA	194	SAUDI ARABIA	SAUDI ARABIA	
SB	195	SOLOMON ISLANDS	SOLOMON ISLANDS	
SC	196	SEYCHELLES	SEYCHELLES	
SD	197	SUDAN	SUDAN	
SE	198	SWEDEN	SWEDEN	
SG	199	SINGAPORE	SINGAPORE	
SH	200	ST. HELENA	ST. HELENA	
SI	201	SLOVENIA	SLOVENIA	
SJ	202	SVALBARD & JAN MAYEN ISLANDS	SVALBARD & JAN MAYEN ISLANDS	
SK	203	SLOVAK REPUBLIC	SLOVAK REPUBLIC	
SL	204	SIERRA LEONE	SIERRA LEONE	
SM	205	SAN MARINO	SAN MARINO	
SN	206	SENEGAL	SENEGAL	
SO	207	SOMALIA	SOMALIA	
SR	208	SURINAME	SURINAME	
ST	209	SAO TOME AND PRINCIPE	SAO TOME AND PRINCIPE	
SU	210	USSR (FORMER)	USSR (FORMER)	
SV	211	EL SALVADOR	EL SALVADOR	
SY	212	SYRIA	SYRIA	
SZ	213	SWAZILAND	SWAZILAND	
TC	214	TURKS AND CAICOS ISLANDS	TURKS AND CAICOS ISLANDS	
TD	215	CHAD	CHAD	
TF	216	FRENCH SOUTHERN TERRITORIES	FRENCH SOUTHERN TERRITORIES	
TG	217	TOGO	TOGO	
TH	218	THAILAND	THAILAND	
TJ	219	TAJIKISTAN	TAJIKISTAN	
TK	220	TOKELAU	TOKELAU	
TM	221	TURKMENISTAN	TURKMENISTAN	
TN	222	TUNISIA	TUNISIA	
TO	223	TONGA	TONGA	



Code Classification			Code Classification Name	
05			Nation	
Code	Sort Order	Code Name	Code Description	remark
TP	224	EAST TIMOR	EAST TIMOR	
TR	225	TURKEY	TURKEY	
TT	226	TRINIDAD AND TOBAGO	TRINIDAD AND TOBAGO	
TV	227	TUVALU	TUVALU	
TW	228	TAIWAN	TAIWAN	
TZ	229	TANZANIA	TANZANIA	
UA	230	UKRAINE	UKRAINE	
UG	231	UGANDA	UGANDA	
UK	232	UNITED KINGDOM	UNITED KINGDOM	
UM	233	US MINOR OUTLYING ISLANDS	US MINOR OUTLYING ISLANDS	
US	234	UNITED STATES	UNITED STATES	
UY	235	URUGUAY	URUGUAY	
UZ	236	UZBEKISTAN	UZBEKISTAN	
VA	237	VATICAN CITY STATE (HOLY SEE)	VATICAN CITY STATE (HOLY SEE)	
VC	238	SAINT VINCENT & THE GRENADINES	SAINT VINCENT & THE GRENADINES	
VE	239	VENEZUELA	VENEZUELA	
VG	240	BRITISH VIRGIN ISLANDS	BRITISH VIRGIN ISLANDS	
VI	241	VIRGIN ISLANDS (U.S.)	VIRGIN ISLANDS (U.S.)	
VN	242	VIET NAM	VIET NAM	
VU	243	VANUATU	VANUATU	
WF	244	WALLIS AND FUTUNA ISLANDS	WALLIS AND FUTUNA ISLANDS	
WS	245	SAMOA	SAMOA	
YE	246	YEMEN	YEMEN	
YT	247	MAYOTTE	MAYOTTE	
YU	248	SERBIA AND MONTENEGRO (FORMER)	SERBIA AND MONTENEGRO (FORMER)	
ZA	249	SOUTH AFRICA	SOUTH AFRICA	
ZM	250	ZAMBIA	ZAMBIA	
ZR	251	(ZAIRE) SEE CD CONGO, DEMOCRATIC REPUBLIC	(ZAIRE) SEE CD CONGO, DEMOCRATIC REPUBLIC	
ZW	252	ZIMBABWE	ZIMBABWE	



4.6 Packaging Unit

Code Classification			Code Classification Name	
17			Packaging Unit	
Code	Sort Order	Code Name	Code Description	remark
AM	1	Ampoule	Ampoule	
BA	2	Barrel	Barrel	
BC	3	Bottlecrate	Bottlecrate	
BE	4	Bundle	Bundle	
BF	5	Balloon, non-protected	Balloon, non-protected	
BG	6	Bag	Bag	
BJ	7	Bucket	Bucket	
BK	8	Basket	Basket	
BL	9	Bale	Bale	
BQ	10	Bottle, protected cylindrical	Bottle, protected cylindrical	
BR	11	Bar	Bar	
BV	12	Bottle, bulbous	Bottle, bulbous	
BZ	13	Bag	Bag	
CA	14	Can	Can	
CH	15	Chest	Chest	
CJ	16	Coffin	Coffin	
CL	17	Coil	Coil	
CR	18	Wooden Box, Wooden Case	Wooden Box, Wooden Case	
CS	19	Cassette	Cassette	
CT	20	Carton	Carton	
CTN	21	Container	Container	
CY	22	Cylinder	Cylinder	
DR	23	Drum	Drum	
GT	24	Extra Countable Item	Extra Countable Item	
HH	25	Hand Baggage	Hand Baggage	
IZ	26	Ingots	Ingots	
JR	27	Jar	Jar	
JU	28	Jug	Jug	
JY	29	Jerry CAN Cylindrical	Jerry CAN Cylindrical	
KZ	30	Canester	Canester	
LZ	31	Logs, in bundle/bunch/truss	Logs, in bundle/bunch/truss	
NT	32	Net	Net	
OU	33	Non-Exterior Packaging Unit	Non-Exterior Packaging Unit	
PD	34	Poddon	Poddon	
PG	35	Plate	Plate	
PI	36	Pipe	Pipe	
PO	37	Pilot	Pilot	



Code Classification			Code Classification Name	
17			Packaging Unit	
Code	Sort Order	Code Name	Code Description	remark
PU	38	Traypack	Traypack	
RL	39	Reel	Reel	
RO	40	Roll	Roll	
RZ	41	Rods, in bundle/bunch/truss	Rods, in bundle/bunch/truss	
SK	42	Skeletoncase	Skeletoncase	
TY	43	Tank, cylindrical	Tank, cylindrical	
VG	44	Bulk,gas(at 1031 mbar 15 oC)	Bulk,gas(at 1031 mbar 15 oC)	
VL	45	Bulk,liquid(at normal temperature/pressure)	Bulk,liquid(at normal temperature/pressure)	
VO	46	Bulk, solid, large particles(nodules)	Bulk, solid, large particles("nodules")	
VQ	47	Bulk, gas (liquefied at abnormal temperature/pressure)	Bulk, gas(liquefied at abnormal temperature/pressure)	
VR	48	Bulk, solid, granular particles(grains)	Bulk, solid, granular particles("grains")	
VT	49	Extra Bulk Item	Extra Bulk Item	
VY	50	Bulk, fine particles(powder)	Bulk, fine particles("powder")	
ML	51	Mills	cigarette Mills	
TN	52	TAN	1TAN REFER TO 20BAGS	

4.7 Unit of Quantity

Code Classification			Code Classification Name	
10			Unit of Quantity	
Code	Sort Order	Code Name	Code Description	remark
4B	1	Pair	Pair	
AV	2	Cap	Cap	
BA	3	Barrel	Barrel	
BE	4	bundle	bundle	
BG	5	bag	bag	
BL	6	block	block	
BLL	7	BLL Barrel	BLL Barrel (petroleum) (158,987 dm3)	
BX	8	box	box	
CA	9	Can	Can	
CEL	10	Cell	Cell	
CMT	11	centimetre	centimetre	
CR	12	CARAT	CARAT	
DR	13	Drum	Drum	



Code Classification			Code Classification Name	
10			Unit of Quantity	
Code	Sort Order	Code Name	Code Description	remark
DZ	14	Dozen	Dozen	
GLL	15	Gallon	Gallon	
GRM	16	Gram	Gram	
GRO	17	Gross	Gross	
KG	18	Kilo-Gramme	Kilo-Gramme	
KTM	19	kilometre	kilometre	
KWT	20	kilowatt	kilowatt	
L	21	Litre	Litre	
LBR	22	pound	pound	
LK	23	link	link	
LTR	24	Litre	Litre	
M	25	Metre	Metre	
M2	26	Square Metre	Square Metre	
M3	27	Cubic Metre	Cubic Metre	
MGM	28	milligram	milligram	
MTR	29	metre	metre	
MWT	30	megawatt hour (1000 kW.h)	megawatt hour (1000 kW.h)	
NO	31	Number	Number	
NX	32	part per thousand	part per thousand	
PA	33	packet	packet	
PG	34	plate	plate	
PR	35	pair	pair	
RL	36	reel	reel	
RO	37	roll	roll	
SET	38	set	set	
ST	39	sheet	sheet	
TNE	40	tonne (metric ton)	tonne (metric ton)	
TU	41	tube	tube	
U	42	Pieces/item [Number]	Pieces/item [Number]	
YRD	43	yard	yard	



4.8 Currency

Code Classification			Code Classification Name	
33			Currency	
Code	Sort Order	Code Name	Code Description	remark
AED	1	United Arab Emirates dirham	United Arab Emirates dirham	
AFN	2	Afghan afghani	Afghan afghani	
ALL	3	Albanian lek	Albanian lek	
AMD	4	Armenian dram	Armenian dram	
ANG	5	Netherlands Antillean guilder	Netherlands Antillean guilder	
AOA	6	Angolan kwanza	Angolan kwanza	
ARS	7	Argentine peso	Argentine peso	
AUD	8	Australian dollar	Australian dollar	
AWG	9	Aruban florin	Aruban florin	
AZN	10	Azerbaijani manat	Azerbaijani manat	
BAM	11	Bosnia and Herzegovina convertible mark	Bosnia and Herzegovina convertible mark	
BBD	12	Barbados dollar	Barbados dollar	
BDT	13	Bangladeshi taka	Bangladeshi taka	
BGN	14	Bulgarian lev	Bulgarian lev	
BHD	15	Bahraini dinar	Bahraini dinar	
BIF	16	Burundian franc	Burundian franc	
BMD	17	Bermudian dollar	Bermudian dollar	
BND	18	Brunei dollar	Brunei dollar	
BOB	19	Boliviano	Boliviano	
BOV	20	Bolivian Mvdol (funds code)	Bolivian Mvdol (funds code)	
BRL	21	Brazilian real	Brazilian real	
BSD	22	Bahamian dollar	Bahamian dollar	
BTN	23	Bhutanese ngultrum	Bhutanese ngultrum	
BWP	24	Botswana pula	Botswana pula	
BYN	25	New Belarusian ruble	New Belarusian ruble	
BYR	26	Belarusian ruble	Belarusian ruble	
BZD	27	Belize dollar	Belize dollar	
CAD	28	Canadian dollar	Canadian dollar	
CDF	29	Congolese franc	Congolese franc	
CHE	30	WIR Euro (complementary currency)	WIR Euro (complementary currency)	
CHF	31	Swiss franc	Swiss franc	
CHW	32	WIR Franc (complementary)	WIR Franc (complementary currency)	



Code Classification			Code Classification Name	
Code	Sort Order	Code Name	Code Description	remark
33			Currency	
		currency)		
CLF	33	Unidad de Fomento (funds code)	Unidad de Fomento (funds code)	
CLP	34	Chilean peso	Chilean peso	
CNY	35	Chinese yuan	Chinese yuan	
COP	36	Colombian peso	Colombian peso	
COU	37	Unidad de Valor Real (UVR) (funds code)	Unidad de Valor Real (UVR) (funds code)	
CRC	38	Costa Rican colon	Costa Rican colon	
CUC	39	Cuban convertible peso	Cuban convertible peso	
CUP	40	Cuban peso	Cuban peso	
CVE	41	Cape Verde escudo	Cape Verde escudo	
CZK	42	Czech koruna	Czech koruna	
DJF	43	Djiboutian franc	Djiboutian franc	
DKK	44	Danish krone	Danish krone	
DOP	45	Dominican peso	Dominican peso	
DZD	46	Algerian dinar	Algerian dinar	
EGP	47	Egyptian pound	Egyptian pound	
ERN	48	Eritrean nakfa	Eritrean nakfa	
ETB	49	Ethiopian birr	Ethiopian birr	
EUR	50	Euro	Euro	
FJD	51	Fiji dollar	Fiji dollar	
FKP	52	Falkland Islands pound	Falkland Islands pound	
GBP	53	Pound sterling	Pound sterling	
GEL	54	Georgian lari	Georgian lari	
GHS	55	Ghanaian cedi	Ghanaian cedi	
GIP	56	Gibraltar pound	Gibraltar pound	
GMD	57	Gambian dalasi	Gambian dalasi	
GNF	58	Guinean franc	Guinean franc	
GTQ	59	Guatemalan quetzal	Guatemalan quetzal	
GYD	60	Guyanese dollar	Guyanese dollar	
HKD	61	Hong Kong dollar	Hong Kong dollar	
HNL	62	Honduran lempira	Honduran lempira	
HRK	63	Croatian kuna	Croatian kuna	
HTG	64	Haitian gourde	Haitian gourde	
HUF	65	Hungarian forint	Hungarian forint	
IDR	66	Indonesian rupiah	Indonesian rupiah	



Code Classification			Code Classification Name	
33			Currency	
Code	Sort Order	Code Name	Code Description	remark
ILS	67	Israeli new shekel	Israeli new shekel	
INR	68	Indian rupee	Indian rupee	
IQD	69	Iraqi dinar	Iraqi dinar	
IRR	70	Iranian rial	Iranian rial	
ISK	71	Icelandic króna	Icelandic króna	
JMD	72	Jamaican dollar	Jamaican dollar	
JOD	73	Jordanian dinar	Jordanian dinar	
JPY	74	Japanese yen	Japanese yen	
KES	75	Kenyan shilling	Kenyan shilling	
KGS	76	Kyrgyzstani som	Kyrgyzstani som	
KHR	77	Cambodian riel	Cambodian riel	
KMF	78	Comoro franc	Comoro franc	
KPW	79	North Korean won	North Korean won	
KRW	80	South Korean won	South Korean won	
KWD	81	Kuwaiti dinar	Kuwaiti dinar	
KYD	82	Cayman Islands dollar	Cayman Islands dollar	
KZT	83	Kazakhstani tenge	Kazakhstani tenge	
LAK	84	Lao kip	Lao kip	
LBP	85	Lebanese pound	Lebanese pound	
LKR	86	Sri Lankan rupee	Sri Lankan rupee	
LRD	87	Liberian dollar	Liberian dollar	
LSL	88	Lesotho loti	Lesotho loti	
LYD	89	Libyan dinar	Libyan dinar	
MAD	90	Moroccan dirham	Moroccan dirham	
MDL	91	Moldovan leu	Moldovan leu	
MGA	92	Malagasy ariary	Malagasy ariary	
MKD	93	Macedonian denar	Macedonian denar	
MMK	94	Myanmar kyat	Myanmar kyat	
MNT	95	Mongolian tögrög	Mongolian tögrög	
MOP	96	Macanese pataca	Macanese pataca	
MRO	97	Mauritanian ouguiya	Mauritanian ouguiya	
MUR	98	Mauritian rupee	Mauritian rupee	
MVR	99	Maldivian rufiyaa	Maldivian rufiyaa	
MWK	100	Malawian kwacha	Malawian kwacha	
MXN	101	Mexican peso	Mexican peso	
MXV	102	Mexican Unidad de Inversion (UDI) (funds code)	Mexican Unidad de Inversion (UDI) (funds code)	



Code Classification			Code Classification Name	
33			Currency	
Code	Sort Order	Code Name	Code Description	remark
MYR	103	Malaysian ringgit	Malaysian ringgit	
MZN	104	Mozambican metical	Mozambican metical	
NAD	105	Namibian dollar	Namibian dollar	
NGN	106	Nigerian naira	Nigerian naira	
NIO	107	Nicaraguan córdoba	Nicaraguan córdoba	
NOK	108	Norwegian krone	Norwegian krone	
NPR	109	Nepalese rupee	Nepalese rupee	
NZD	110	New Zealand dollar	New Zealand dollar	
OMR	111	Omani rial	Omani rial	
PAB	112	Panamanian balboa	Panamanian balboa	
PEN	113	Peruvian Sol	Peruvian Sol	
PGK	114	Papua New Guinean kina	Papua New Guinean kina	
PHP	115	Philippine peso	Philippine peso	
PKR	116	Pakistani rupee	Pakistani rupee	
PLN	117	Polish złoty	Polish złoty	
PYG	118	Paraguayan guaraní	Paraguayan guaraní	
QAR	119	Qatari riyal	Qatari riyal	
RON	120	Romanian leu	Romanian leu	
RSD	121	Serbian dinar	Serbian dinar	
RUB	122	Russian ruble	Russian ruble	
RWF	123	Rwandan franc	Rwandan franc	
SAR	124	Saudi riyal	Saudi riyal	
SBD	125	Solomon Islands dollar	Solomon Islands dollar	
SCR	126	Seychelles rupee	Seychelles rupee	
SDG	127	Sudanese pound	Sudanese pound	
SEK	128	Swedish krona/kronor	Swedish krona/kronor	
SGD	129	Singapore dollar	Singapore dollar	
SHP	130	Saint Helena pound	Saint Helena pound	
SLL	131	Sierra Leonean leone	Sierra Leonean leone	
SOS	132	Somali shilling	Somali shilling	
SRD	133	Surinamese dollar	Surinamese dollar	
SSP	134	South Sudanese pound	South Sudanese pound	
STD	135	São Tomé and Príncipe dobra	São Tomé and Príncipe dobra	



Code Classification			Code Classification Name	
Code	Sort Order	Code Name	Code Description	remark
33			Currency	
SVC	136	Salvadoran colón	Salvadoran colón	
SYP	137	Syrian pound	Syrian pound	
SZL	138	Swazi lilangeni	Swazi lilangeni	
THB	139	Thai baht	Thai baht	
TJS	140	Tajikistani somoni	Tajikistani somoni	
TMT	141	Turkmenistani manat	Turkmenistani manat	
TND	142	Tunisian dinar	Tunisian dinar	
TOP	143	Tongan pa'anga	Tongan pa'anga	
TRY	144	Turkish lira	Turkish lira	
TTD	145	Trinidad and Tobago dollar	Trinidad and Tobago dollar	
TWD	146	New Taiwan dollar	New Taiwan dollar	
TZS	147	Tanzanian shilling	Tanzanian shilling	
UAH	148	Ukrainian hryvnia	Ukrainian hryvnia	
UGX	149	Ugandan shilling	Ugandan shilling	
USD	150	United States dollar	United States dollar	
USN	151	United States dollar (next day) (funds code)	United States dollar (next day) (funds code)	
UYI	152	Uruguay Peso en Unidades Indexadas (URUIURUI) (funds code)	Uruguay Peso en Unidades Indexadas (URUIURUI) (funds code)	
UYU	153	Uruguayan peso	Uruguayan peso	
UZS	154	Uzbekistan som	Uzbekistan som	
VEF	155	Venezuelan bolívar	Venezuelan bolívar	
VND	156	Vietnamese dong	Vietnamese dong	
VUV	157	Vanuatu vatu	Vanuatu vatu	
WST	158	Samoan tala	Samoan tala	
XAF	159	CFA franc BEAC	CFA franc BEAC	
XAG	160	Silver (one troy ounce)	Silver (one troy ounce)	
XAU	161	Gold (one troy ounce)	Gold (one troy ounce)	
XBA	162	European Composite Unit (EURCO) (bond market unit)	European Composite Unit (EURCO) (bond market unit)	



Code Classification			Code Classification Name	
33			Currency	
Code	Sort Order	Code Name	Code Description	remark
XBB	163	European Monetary Unit (E.M.U.-6) (bond market unit)	European Monetary Unit (E.M.U.-6) (bond market unit)	
XBC	164	European Unit of Account 9 (E.U.A.-9) (bond market unit)	European Unit of Account 9 (E.U.A.-9) (bond market unit)	
XBD	165	European Unit of Account 17 (E.U.A.-17) (bond market unit)	European Unit of Account 17 (E.U.A.-17) (bond market unit)	
XCD	166	East Caribbean dollar	East Caribbean dollar	
XDR	167	Special drawing rights	Special drawing rights	
XOF	168	CFA franc BCEAO	CFA franc BCEAO	
XPD	169	Palladium (one troy ounce)	Palladium (one troy ounce)	
XPF	170	CFP franc (franc Pacifique)	CFP franc (franc Pacifique)	
XPT	171	Platinum (one troy ounce)	Platinum (one troy ounce)	
XSU	172	SUCRE	SUCRE	
XTS	173	Code reserved for testing purposes	Code reserved for testing purposes	
XUA	174	ADB Unit of Account	ADB Unit of Account	
XXX	175	No currency	No currency	
YER	176	Yemeni rial	Yemeni rial	
ZAR	177	South African rand	South African rand	
ZMW	178	Zambian kwacha	Zambian kwacha	
ZWL	179	Zimbabwean dollar A/10	Zimbabwean dollar A/10	

4.9 Transaction Type

Code Classification			Code Classification Name	
14			Transaction Type	
Code	Sort Order	Code Name	Code Description	remark
C	1	Copy	Sales and purchase type : Copy	
N	2	Normal	Sales and purchase type : Normal	
P	3	Proforma	Sales and purchase type : Proforma	Proforma



Code Classification			Code Classification Name	
14			Transaction Type	
Code	Sort Order	Code Name	Code Description	remark
				invoice
T	4	Training	Sales and purchase type : Training	

4.10 Sales Receipt Type

Code Classification			Code Classification Name	
37			Sales Receipt Type	
Code	Sort Order	Code Name	Code Description	remark
S	10	Sale	Sale	
R	11	Credit Note after Sale	Credit Note after Sale	

4.11 Payment Method

Code Classification			Code Classification Name	
07			Payment Method	
Code	Sort Order	Code Name	Code Description	remark
01	1	CASH	CASH	
02	2	CREDIT	CREDIT	
03	3	CASH/CREDIT	CASH/CREDIT	
04	4	BANK CHECK	BANK CHECK PAYMENT	
05	5	DEBIT&CREDIT CARD	PAYMENT USING CARD	
06	6	MOBILE MONEY	ANY TRANSACTION USING MOBILE MONEY SYSTEM	
07	7	OTHER	OTHER MEANS OF PAYMENT	

4.12 Transaction Progress

Code Classification			Code Classification Name	
11			Unit of Quantity	
Code	Sort Order	Code Name	Code Description	remark
01	1	Wait for Approval	Wait for Approval	
02	2	Approved	Approved	
03	3	Cancel Requested	Cancel Requested	
04	4	Canceled	Canceled	
05	5	Credit Note Generated	Credit Note Generated	
06	6	Transferred	Transferred	

4.13 Registration Type

Code Classification	Code Classification Name
---------------------	--------------------------



ISO 9001:2015 CERTIFIED

31 Registration Type				
Code	Sort Order	Code Name	Code Description	remark
A	1	Automatic	Automatic	
M	2	Manual	Manual	

4.14 Purchase Receipt Type

Code Classification		Code Classification Name		
38		Purchase Receipt Type		
Code	Sort Order	Code Name	Code Description	remark
P	1	Purchase	Purchase	
R	2	Credit Note after Purchase	Credit Note after Purchase	

4.15 Stock In/Out

Code Classification		Code Classification Name		
12		Stock Movement Type		
Code	Sort Order	Code Name	Code Description	remark
01	1	Import	Incoming -Import	
02	2	Purchase	Incoming -Purchase	
03	3	Return	Incoming -Return	
04	4	Stock Movement	Incoming- Stock	
05	5	Processing	Incoming -Processing	
06	6	Adjustment	Incoming -Adjustment	
11	11	Sale	Outgoing -Sale	
12	12	Return	Outgoing- Return	
13	13	Stock Movement	Outgoing- Stock Movement	
14	14	Processing	Outgoing- Processing	
15	15	Discarding	Outgoing -Discarding	
16	16	Adjustment	Outgoing -Adjustment	

4.16 Import Item Status

Code Classification		Code Classification Name		
26		Import item Status		
Code	Sort Order	Code Name	Code Description	remark
1	1	Unsent		
2	2	Waiting		
3	3	Approved		
4	4	Cancelled		

4.17 Credit Note Reason

Code Classification	Code Classification Name
---------------------	--------------------------



ISO 9001:2015 CERTIFIED

32		Credit Note Reason		
Code	Sort Order	Code Name	Code Description	remark
01	1	Missing Quantity		
02	2	Missing data		
03	3	Damaged		
04	4	Wasted		
05	5	Raw Material Shortage		
06	6	Refund		

4.18 API Response Code

Code	System	Description
000	Server	It is succeeded
001	Server	There is no search result
891	Client	An error occurred while Request URL is created.
892	Client	An error occurred while Request Header data is created.
893	Client	An error occurred while Request Body data is created.
894	Client	An error regarding server communication occurred.
895	Client	An error regarding unallowed Request Method occurred.
896	Client	An error regarding Request Status occurred.
899	Client	An error regarding Client occurred.
900	Server	There is no Header information
901	Server	It is not valid device
902	Server	This device is installed
903	Server	Only OSCU device can be verified.
910	Server	Request parameter error
911	Server	There is no request full text
912	Server	There is a request Method error.
921	Server	Sales or sales invoice data which is declared cannot be received.
922	Server	Sales invoice data can be received after receiving the sales data.
990	Server	The maxium number of views are exceeded
991	Server	There is an error during registration
992	Server	There is an error during modification
993	Server	There is an error during deletion
994	Server	There is an overlapped Data
995	Server	There is no downloaded file
999	Server	There is an unknown error. Please ask it administrator



4.19 Item Code

itemCd is mandatory and it has to be unique. In other words, each item has its unique itemCd.

Below is how item code is generated. For example: itemCd:

KE2NTBA0000012

KE: Country of Origin (Kenya)

2: Product Type (Finished Product)

NT: Packaging Unit (NET)

BA: Quantity Unity (Barrel)

0000012: increments from 0000001 to N value